

Open> image

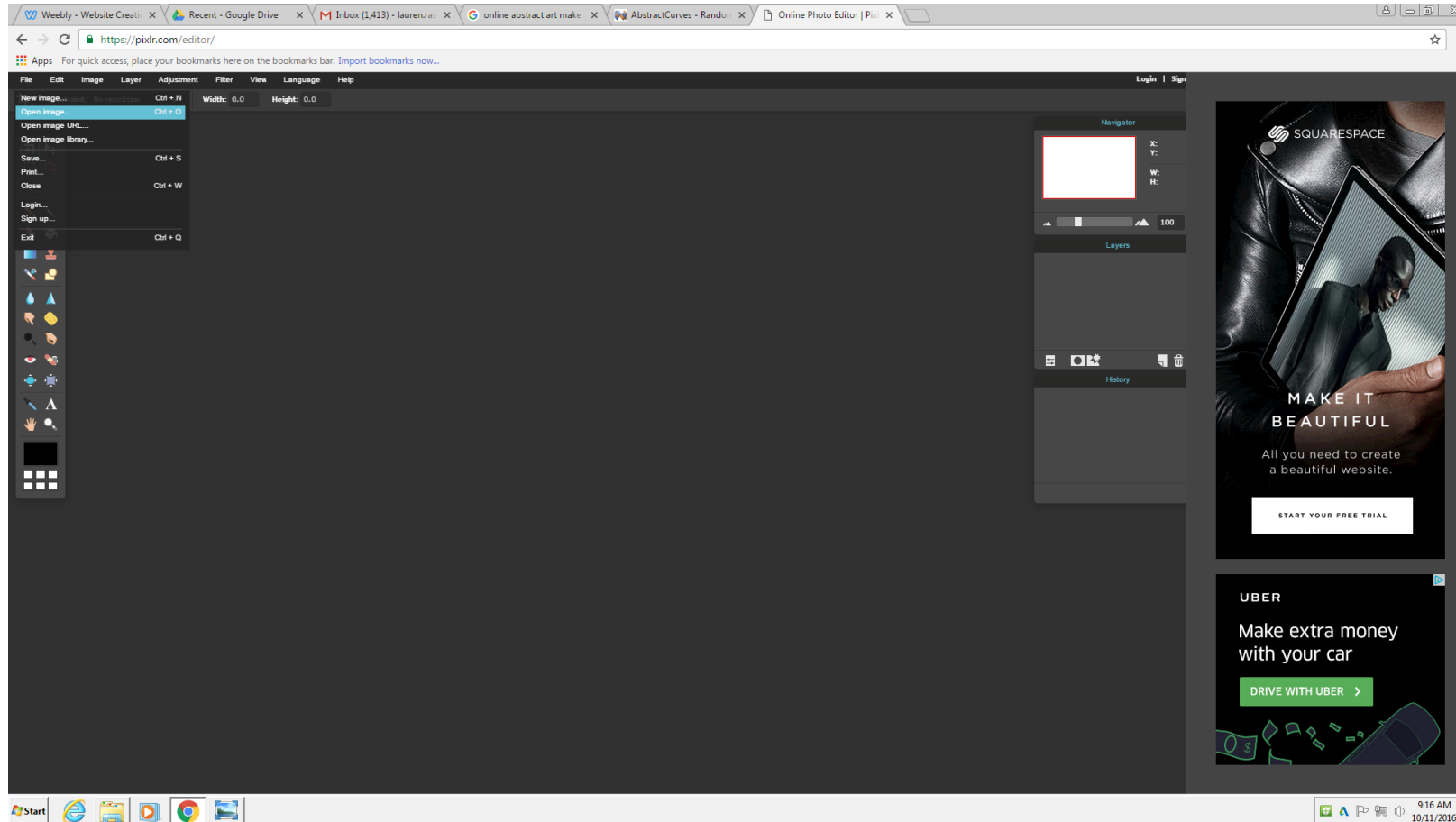
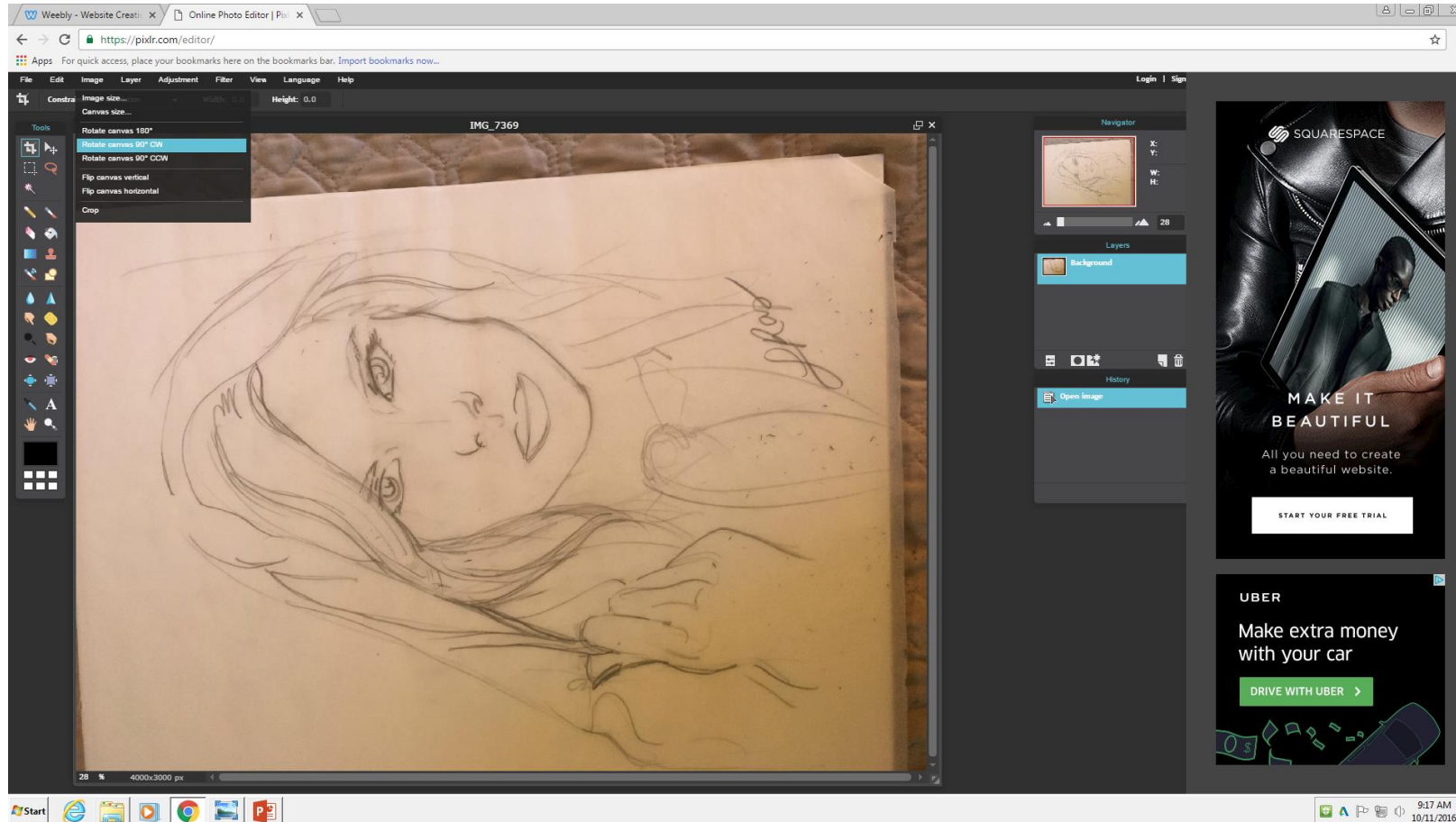
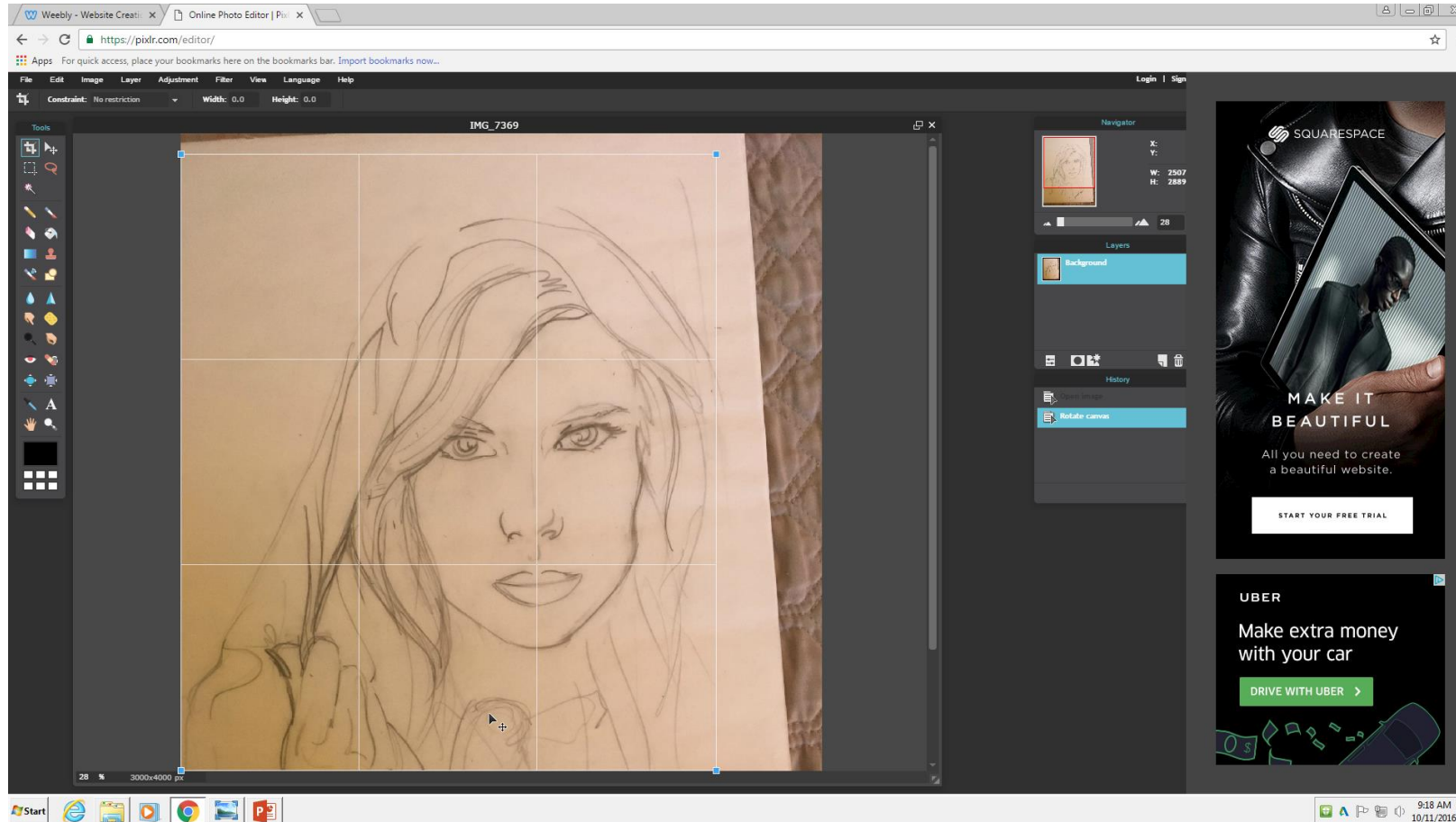


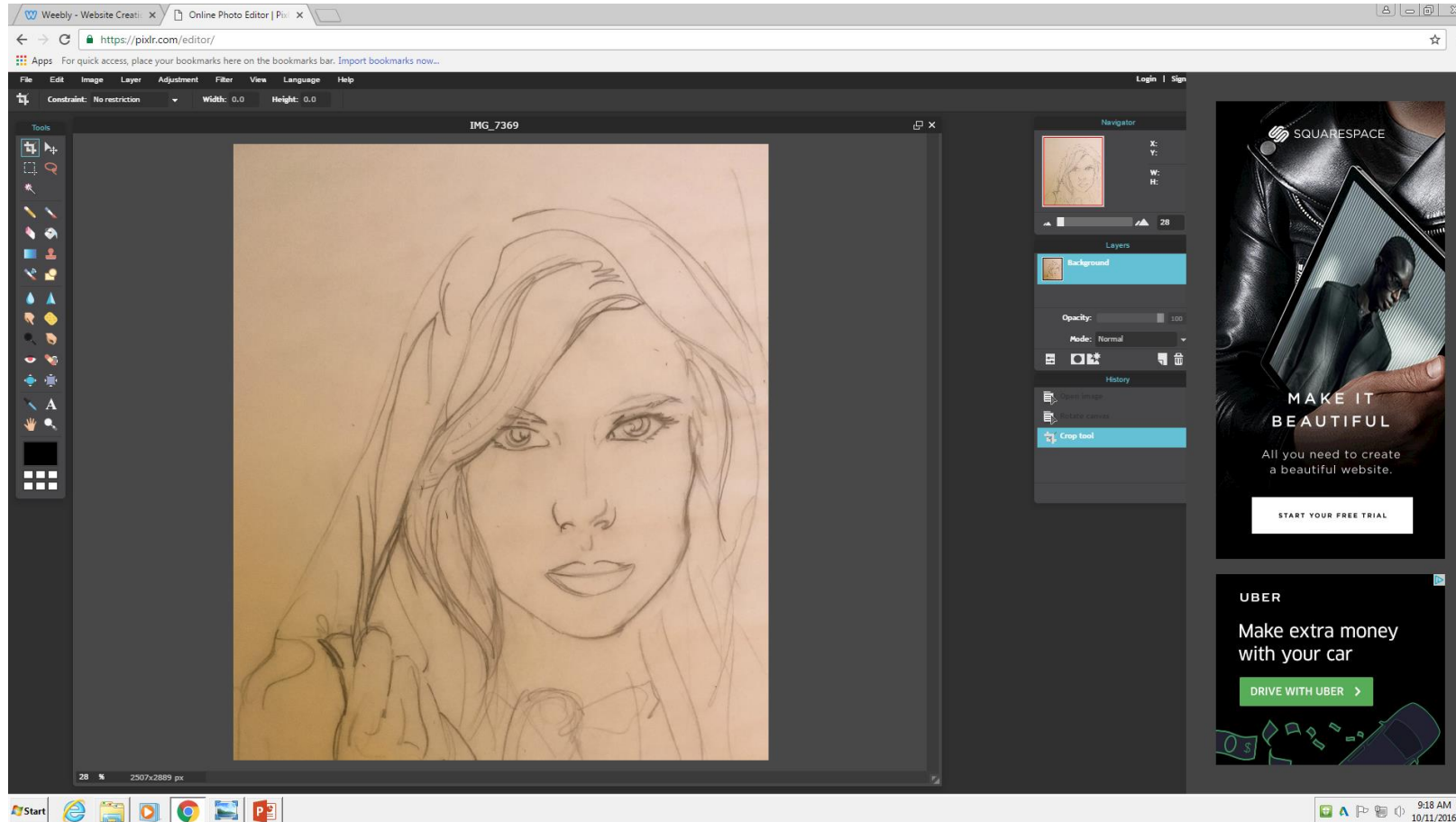
Image > rotate (if nessisary)



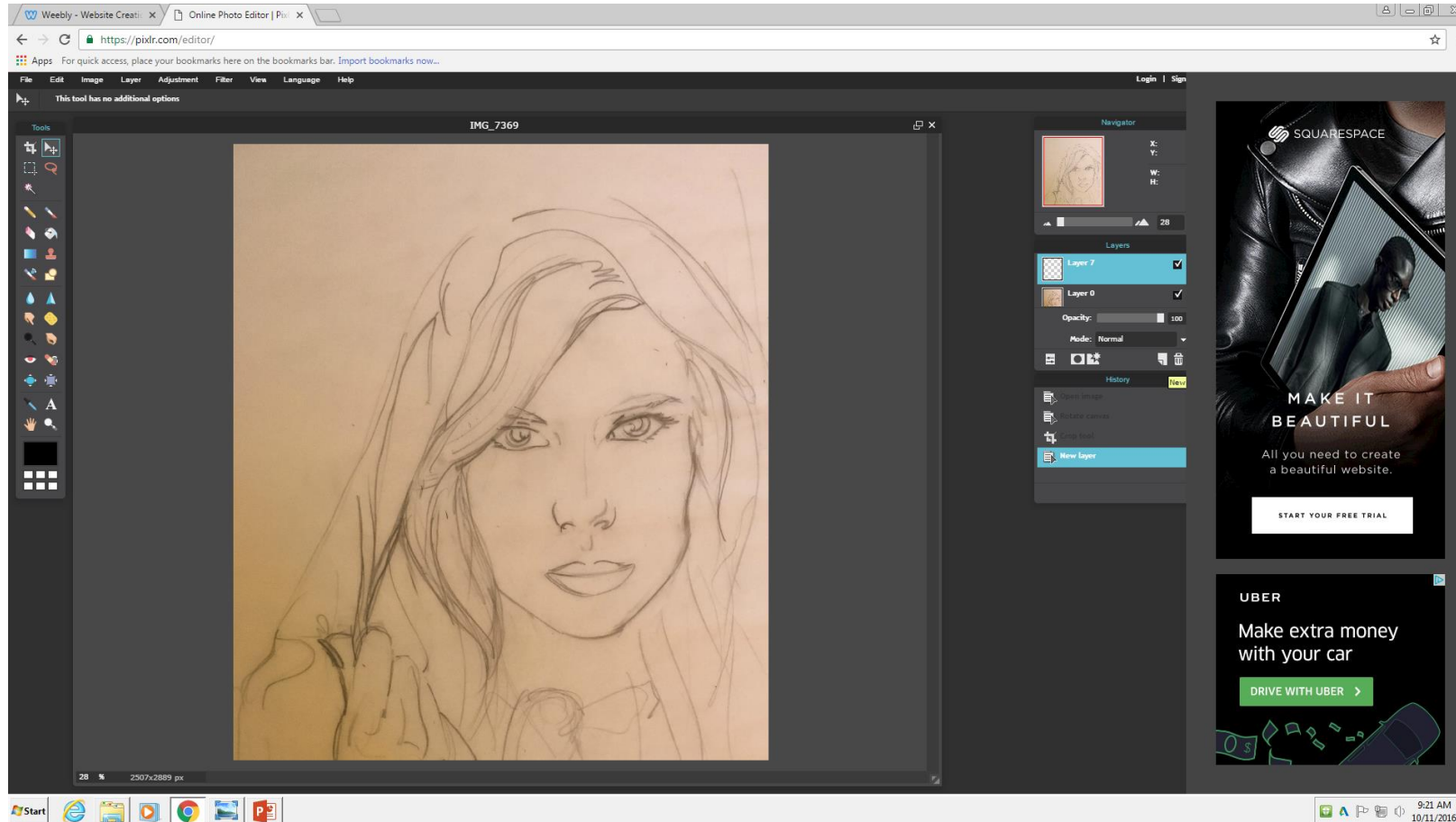
Crop your pic to the right size



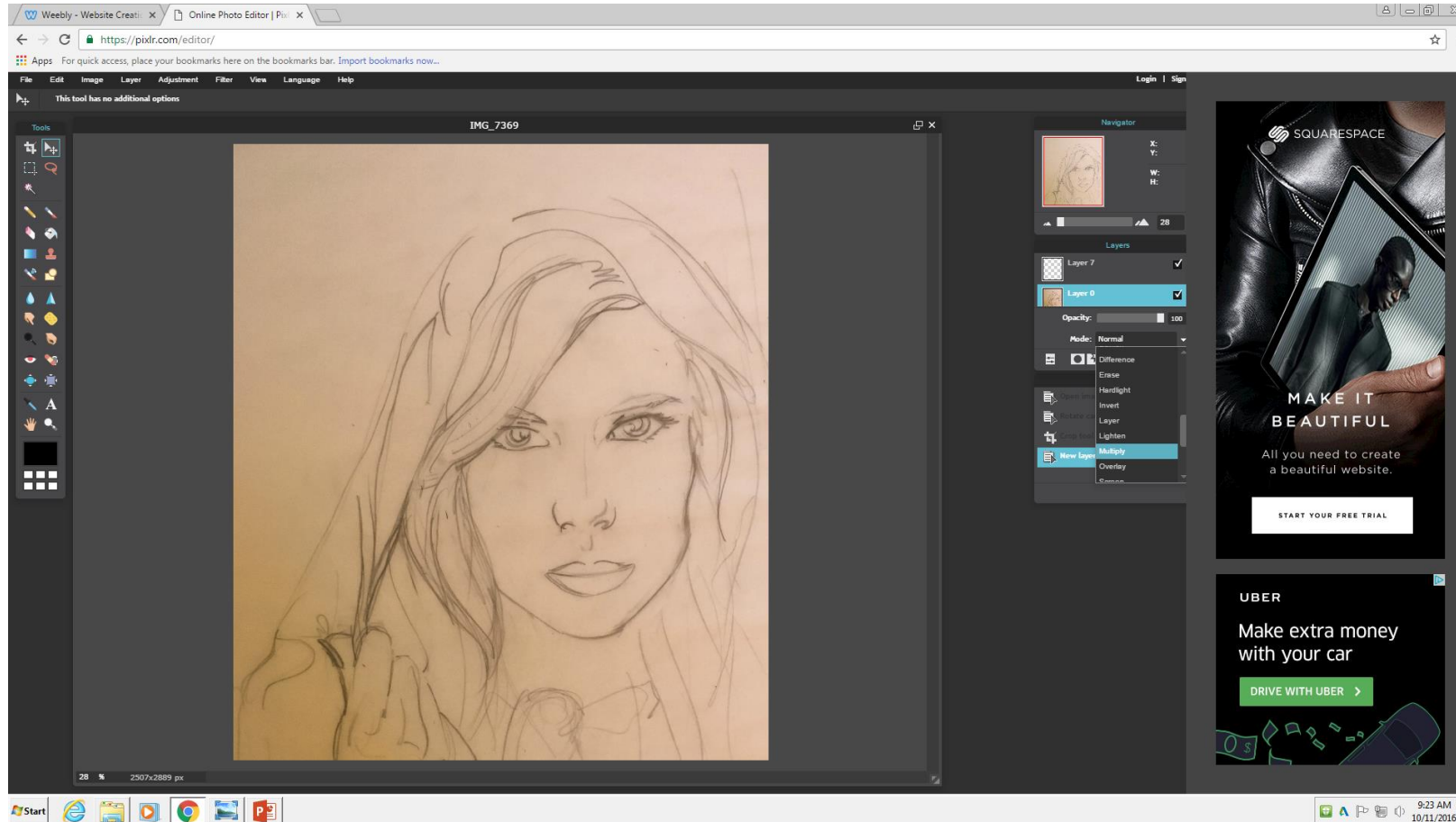
Click the button of the left hand side of the layer box, to open a menu with layer modes



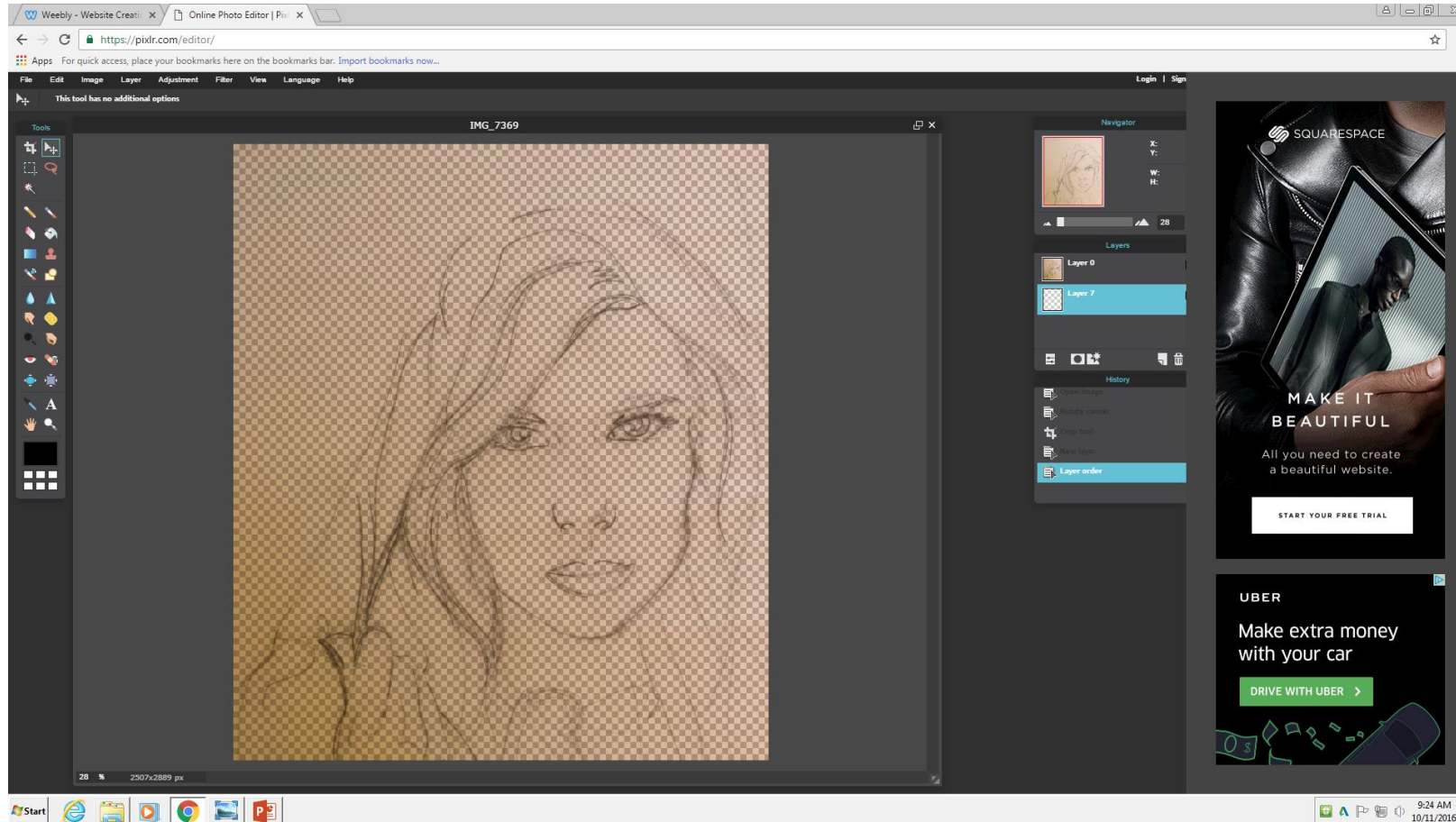
Add new layer and on drawing layer click on the lock to unlock



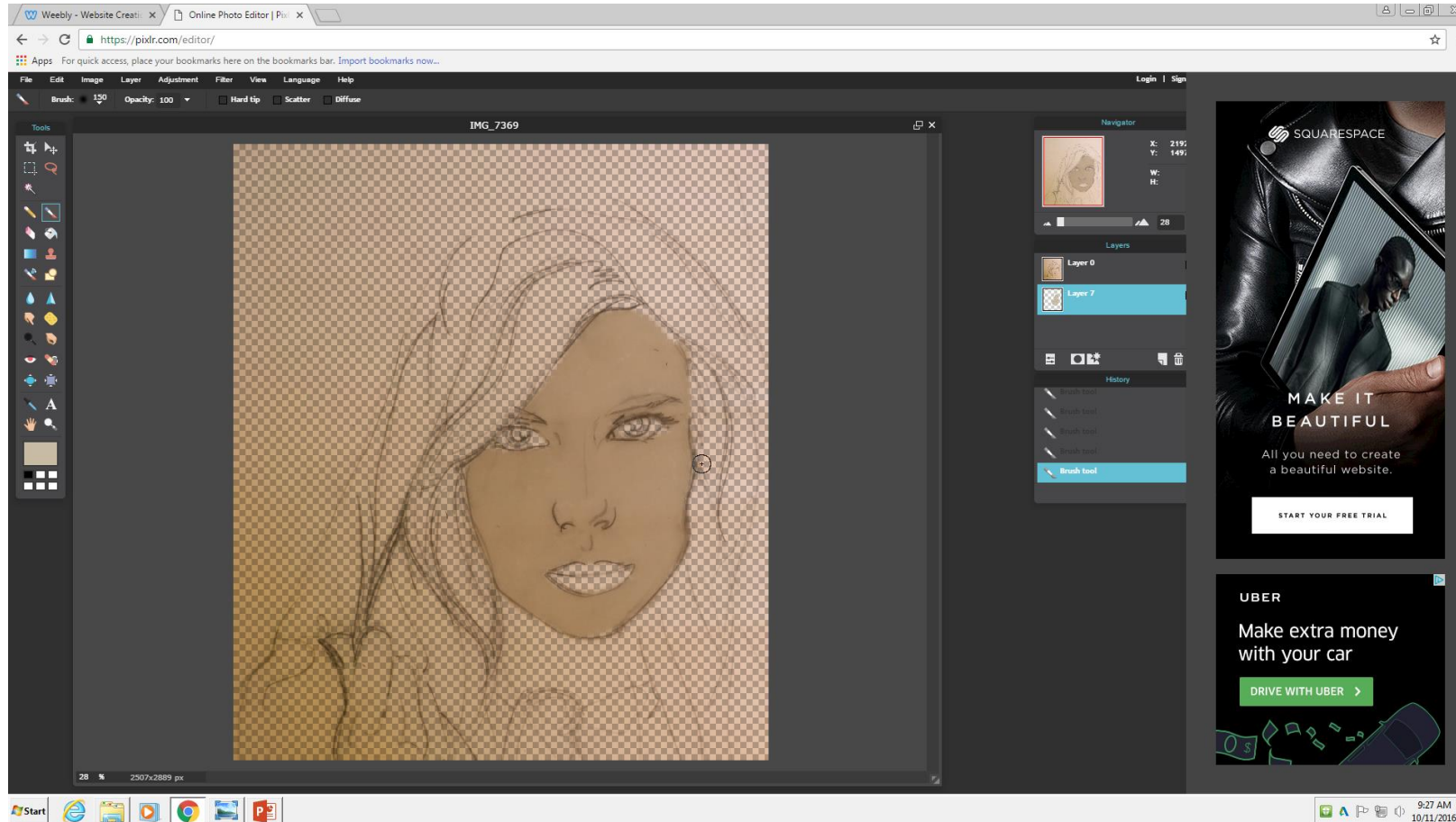
Change the layer mode to the line drawing to multiply



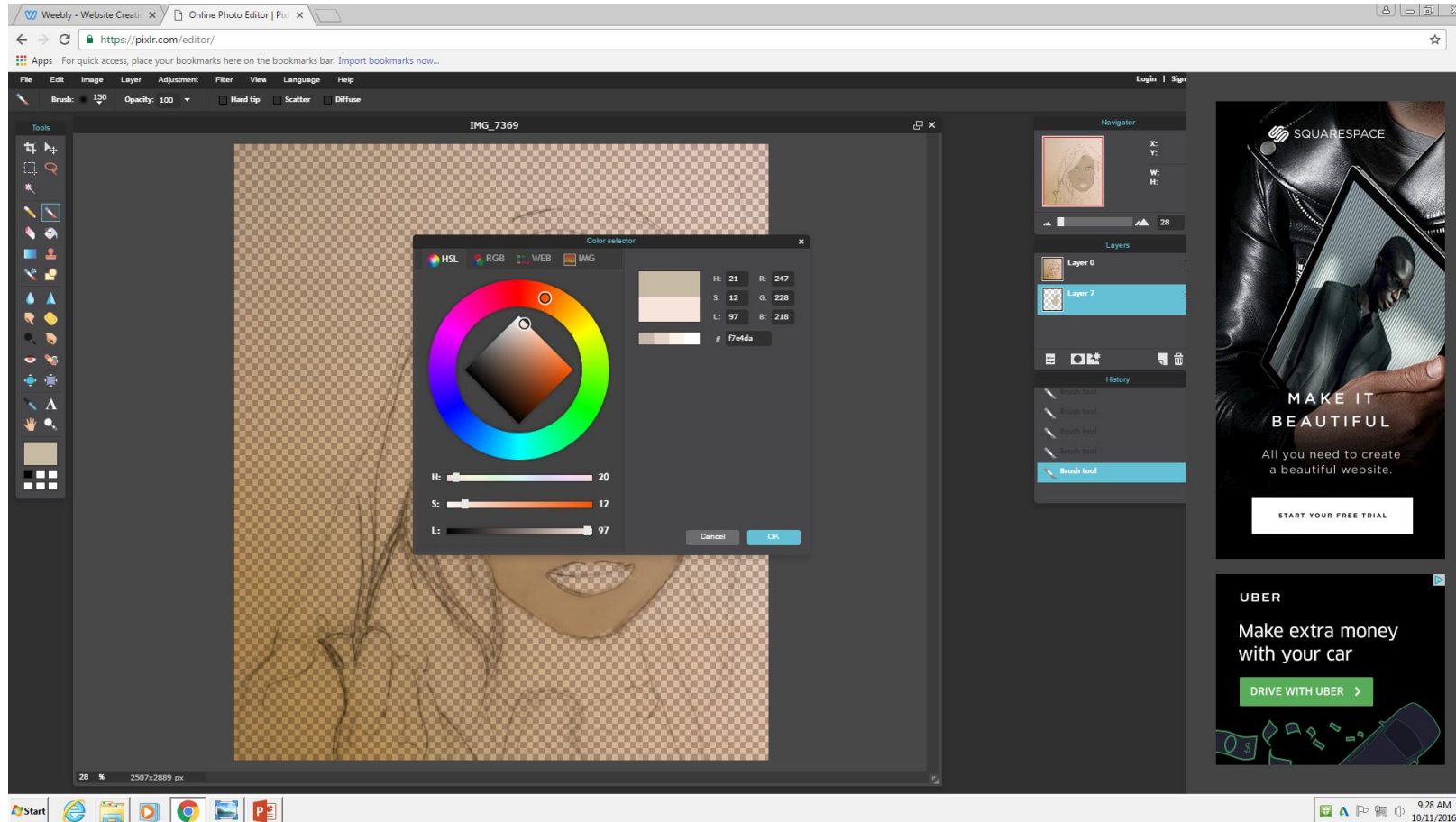
Drag the blank layer to the bottom and start paint on this layer only!!!



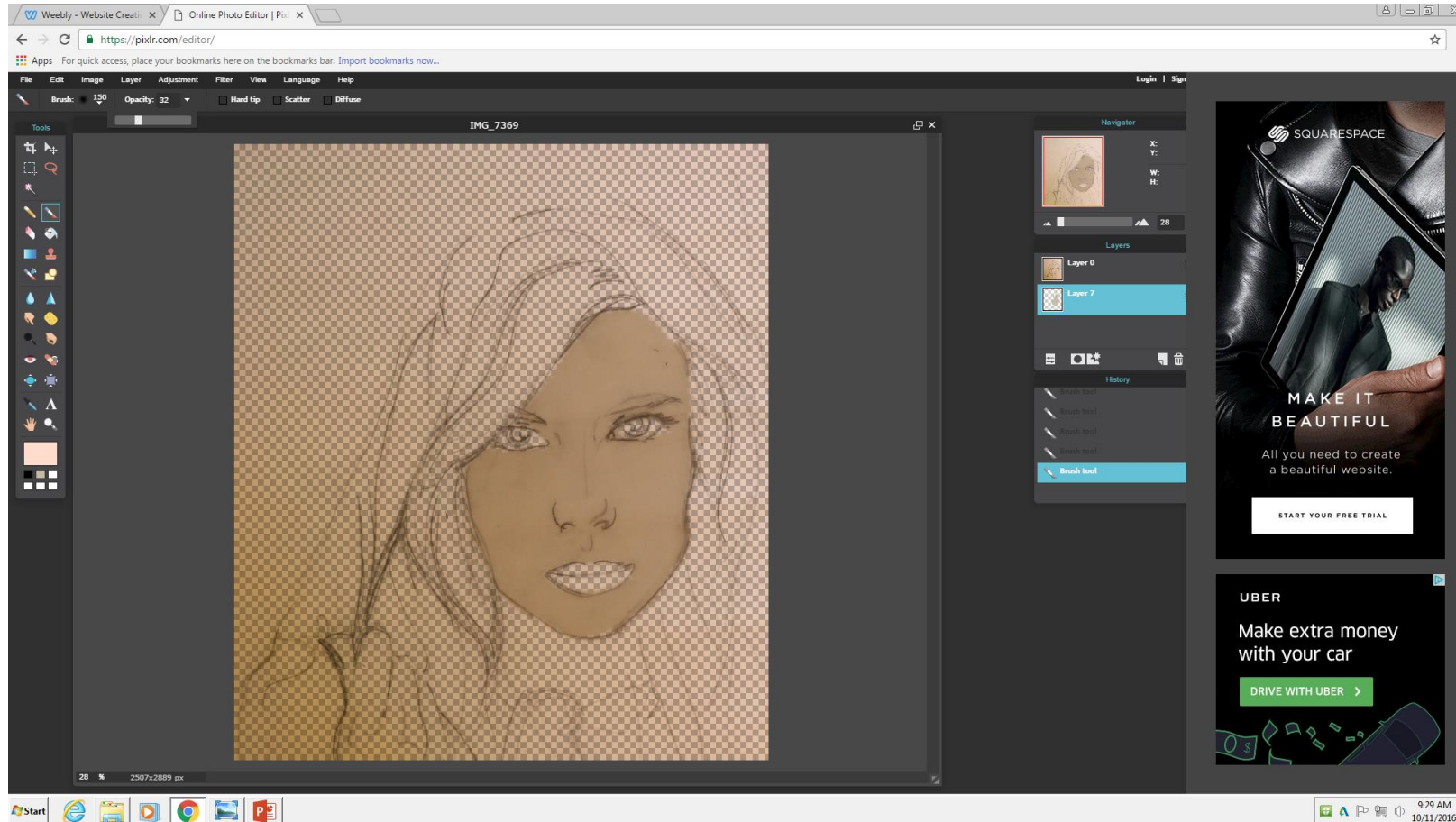
Using your paint brush completely paint the face or one area



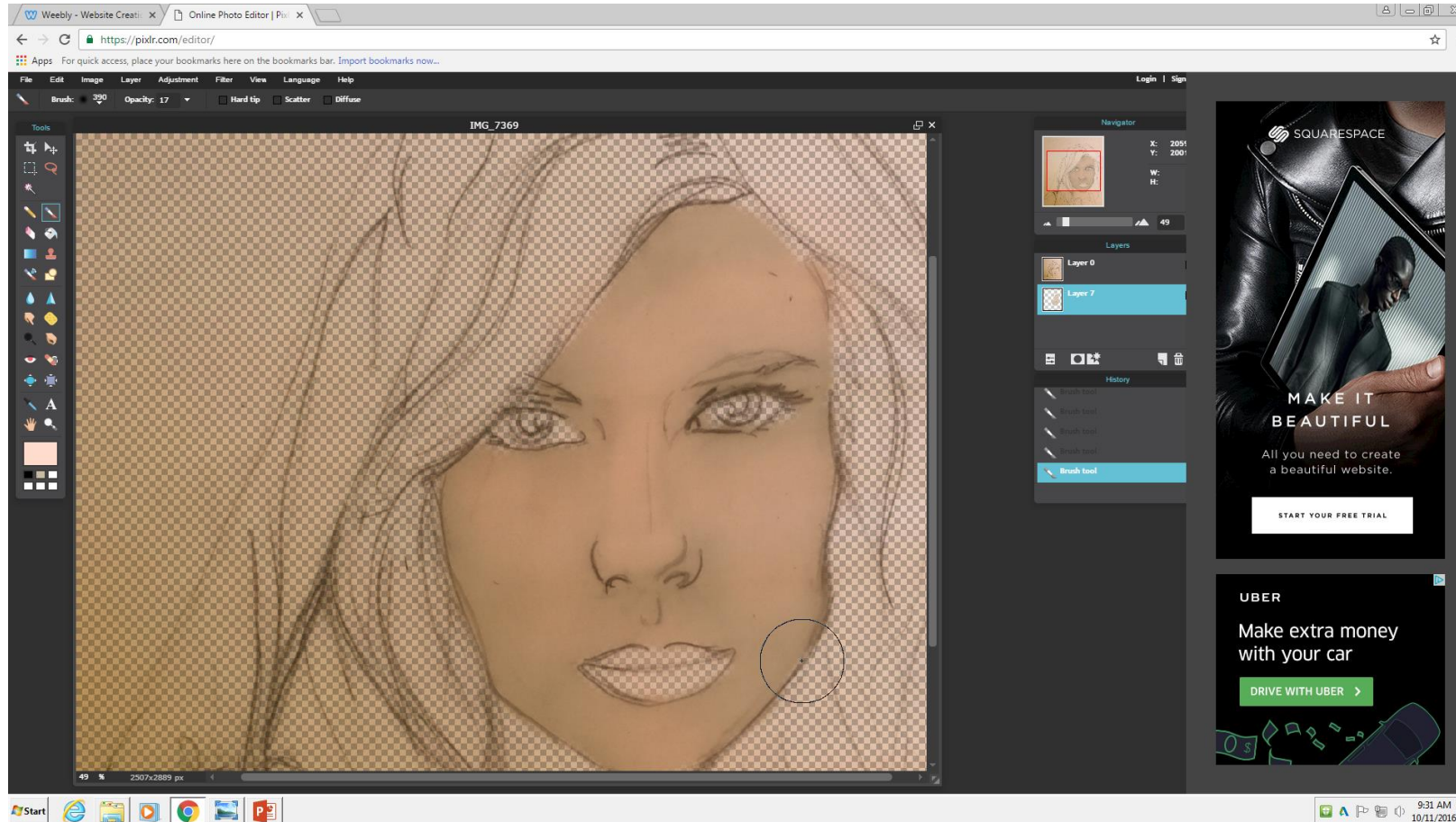
Now change the color to a highlight version of your last color



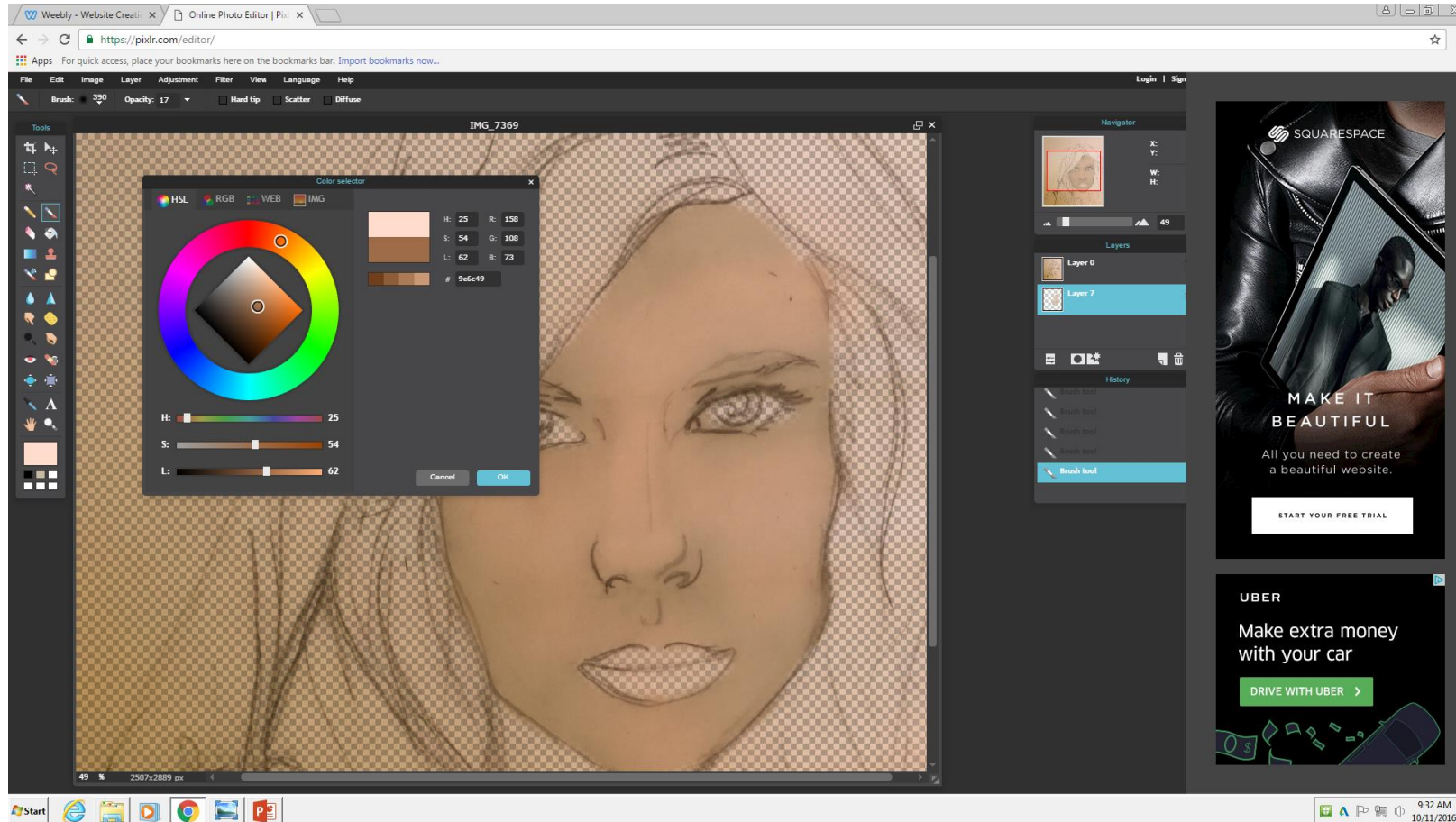
Change the opacity so that the highlights will just enhance and lightly mix into the base color



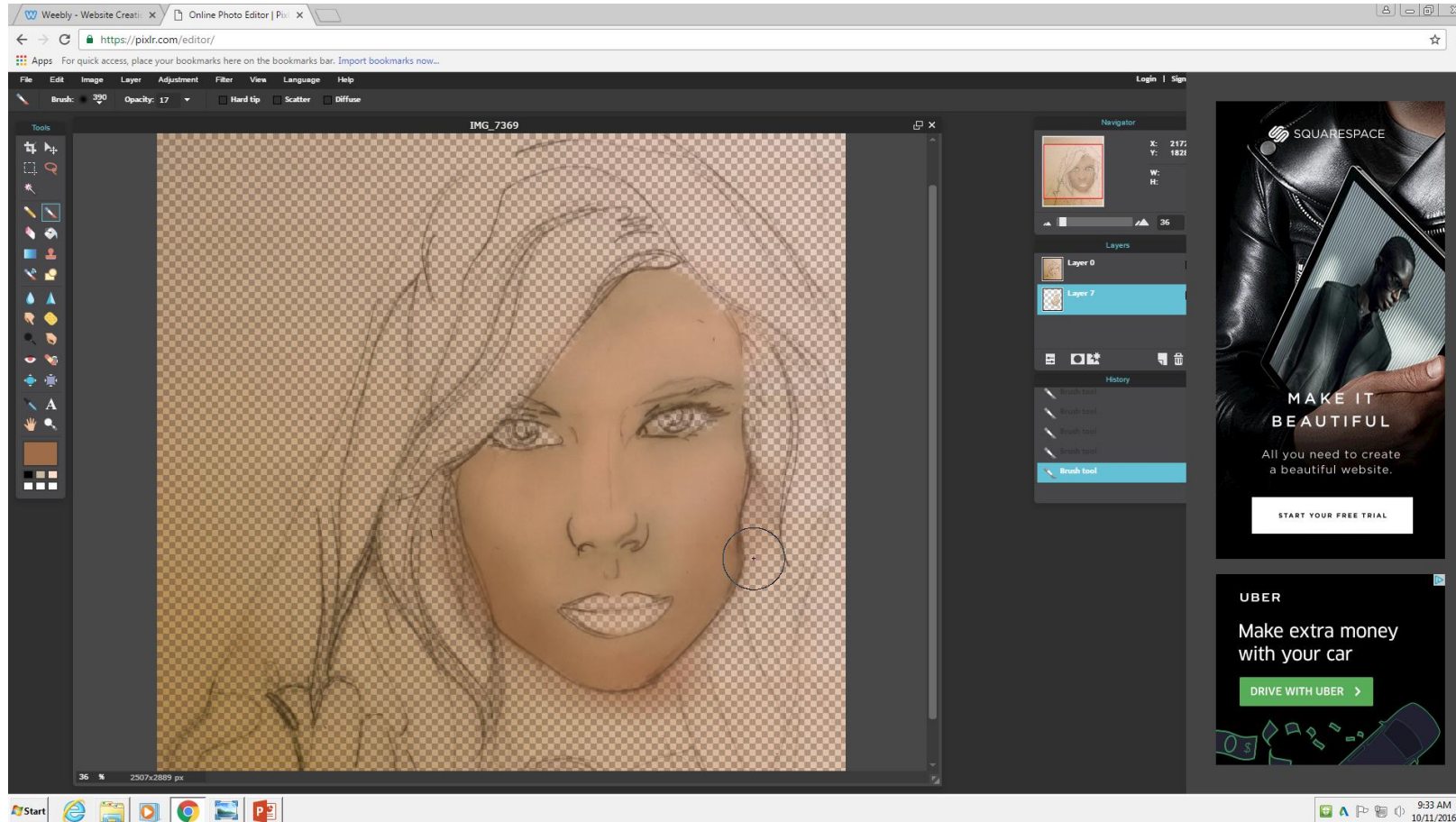
Add highlights to the nose, cheeks and forehead



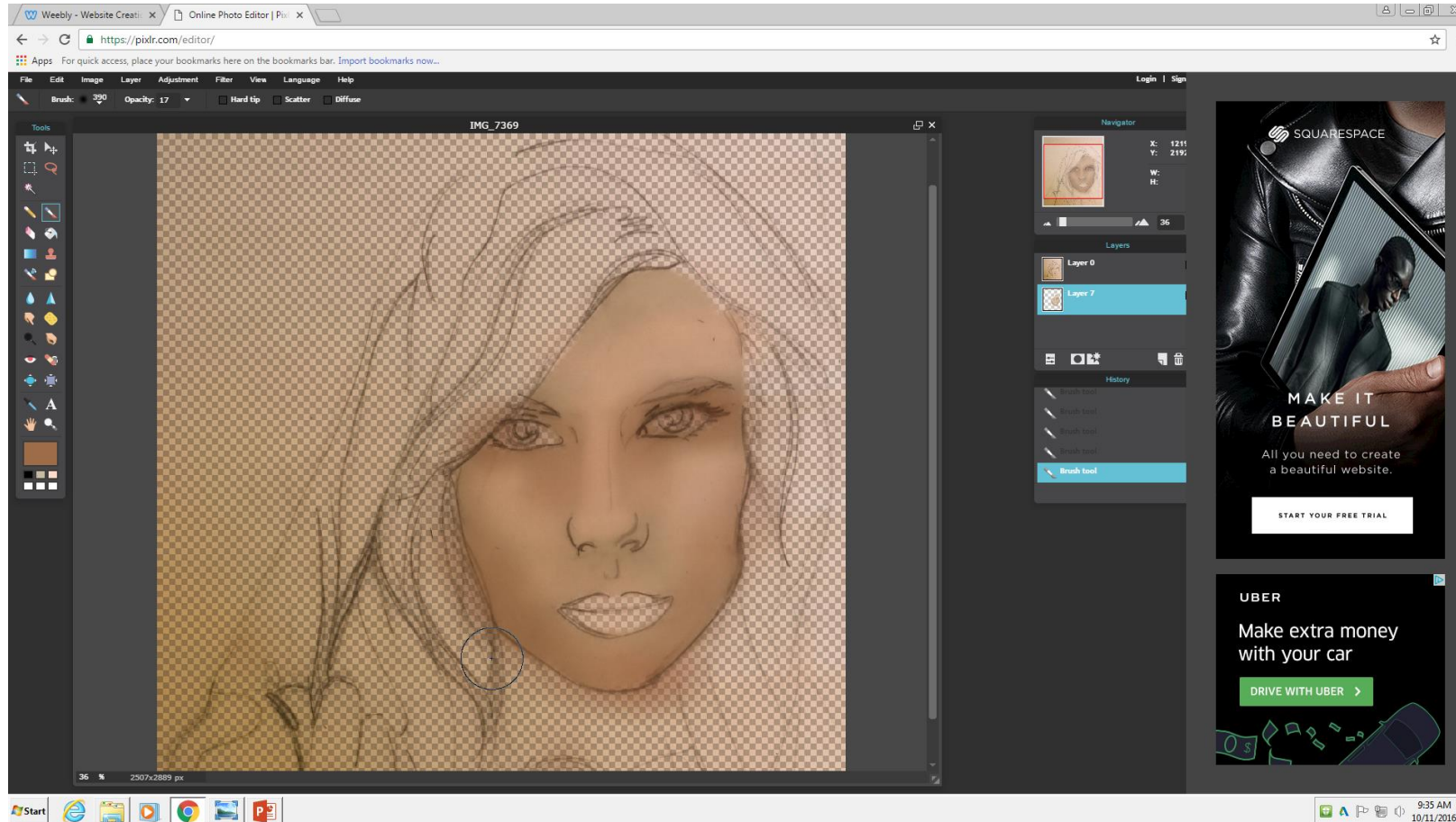
Choose a shadow color that is slightly darker than the base color



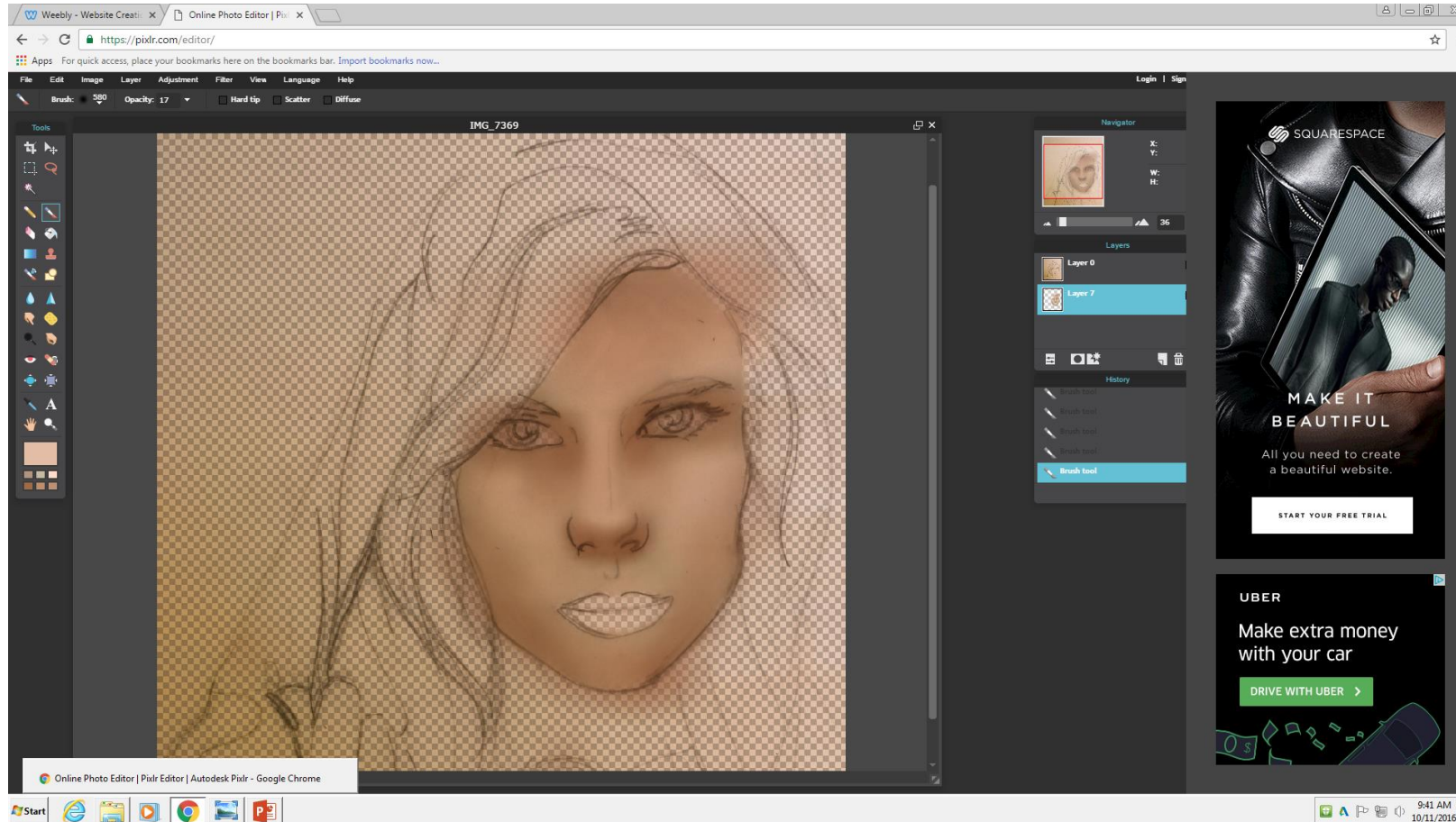
Add shadow bellow the cheek bone and edges of her face



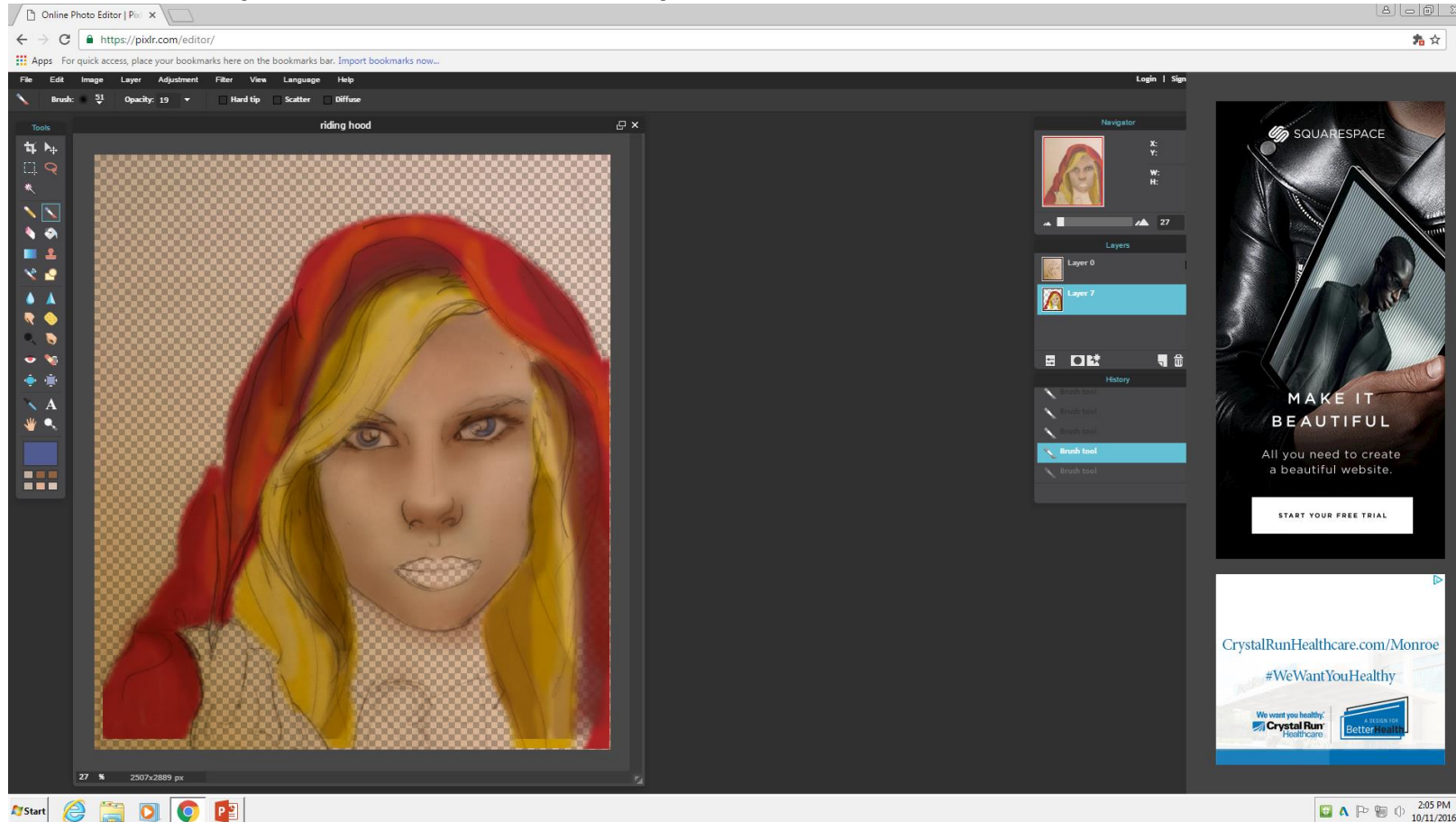
Add a light shadow to the eye area from bellow the brow to the nose area



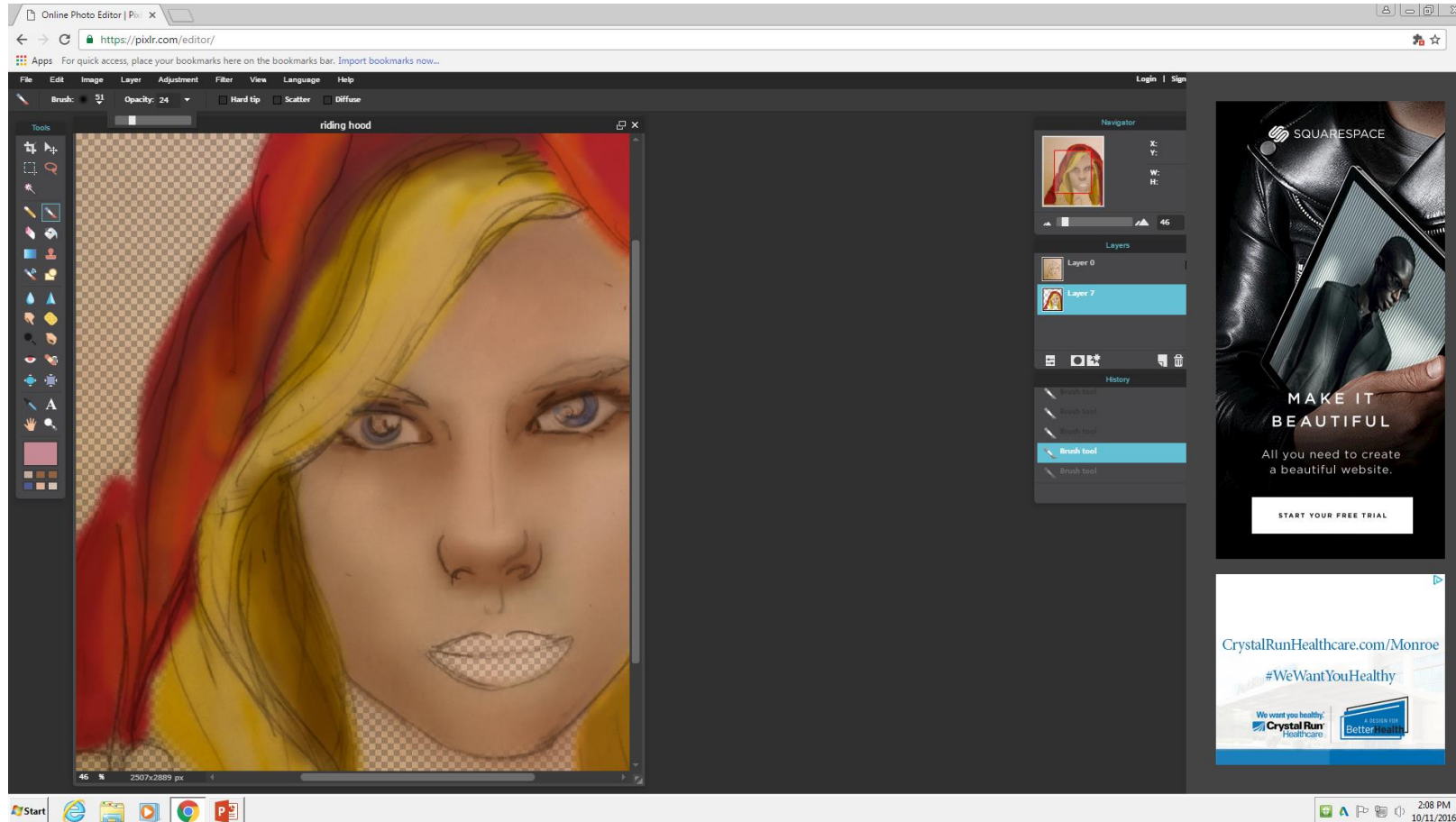
Continence adding base colors and lightly add highlights and shadows to that base color.



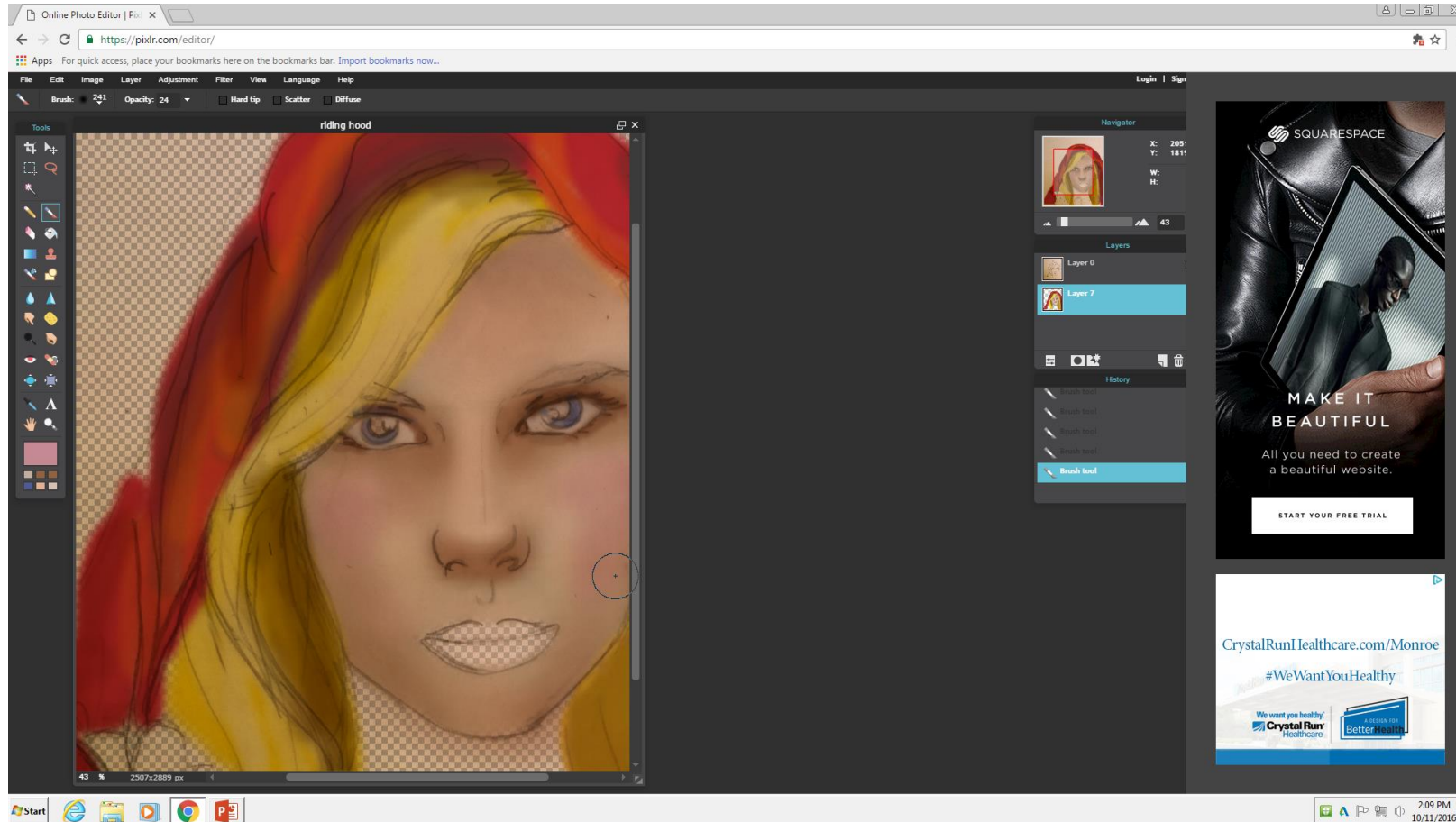
Now that the colors are blocked in you can add accents of other colors onto the basecolor for example maybe a little pink on her cheeks



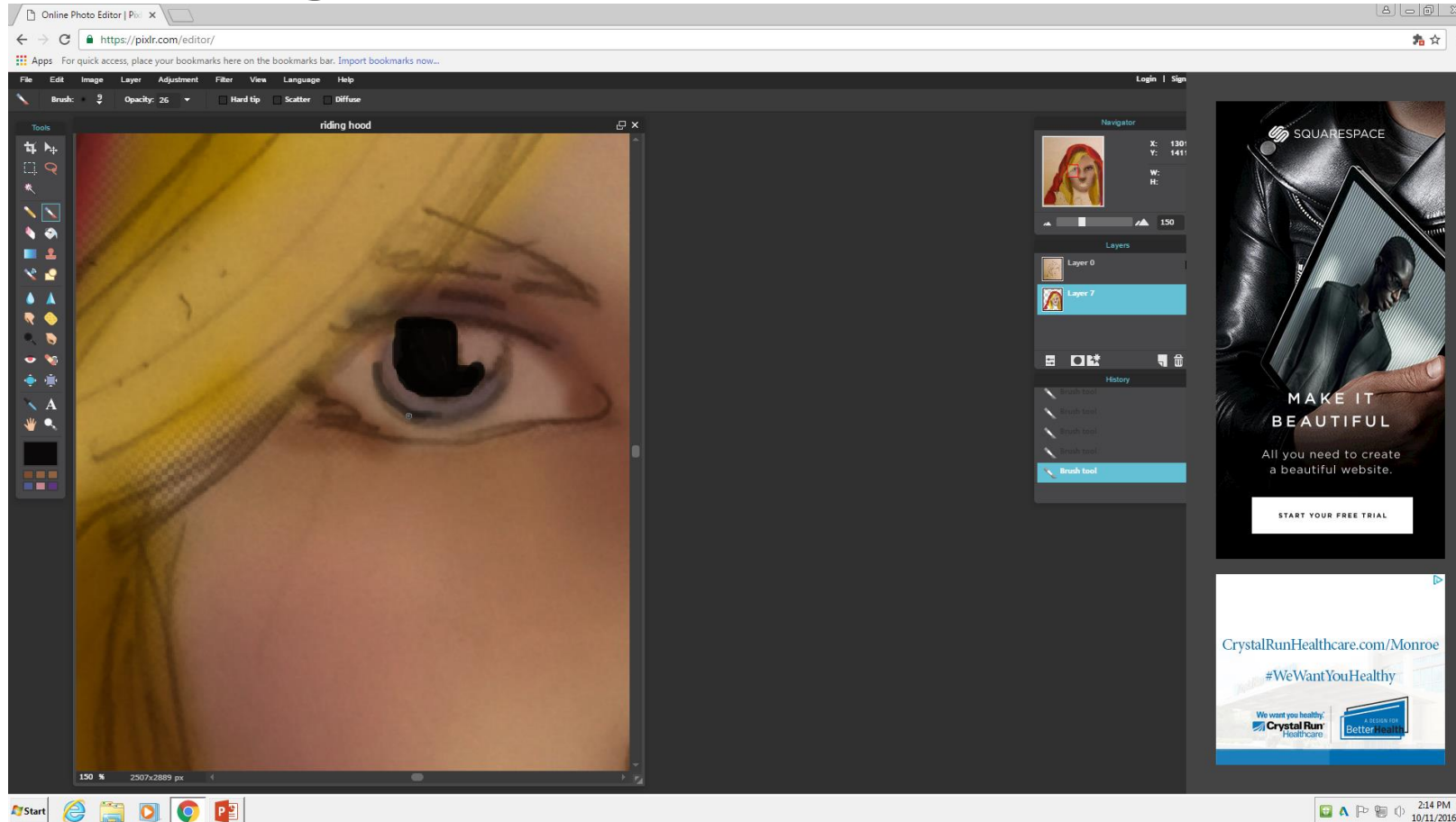
When adding a secondary color/ color mix lower the opacity down!



With my light pink I lightly put a little onto her cheek



Start using smaller brushes and harder edges to create details.. The eyes I used almost 100 opacity and a hard edge



I added some dark blue/ black around the irse and the eyelid and eyelashes to create detail and also to create a focal point of my artwork

