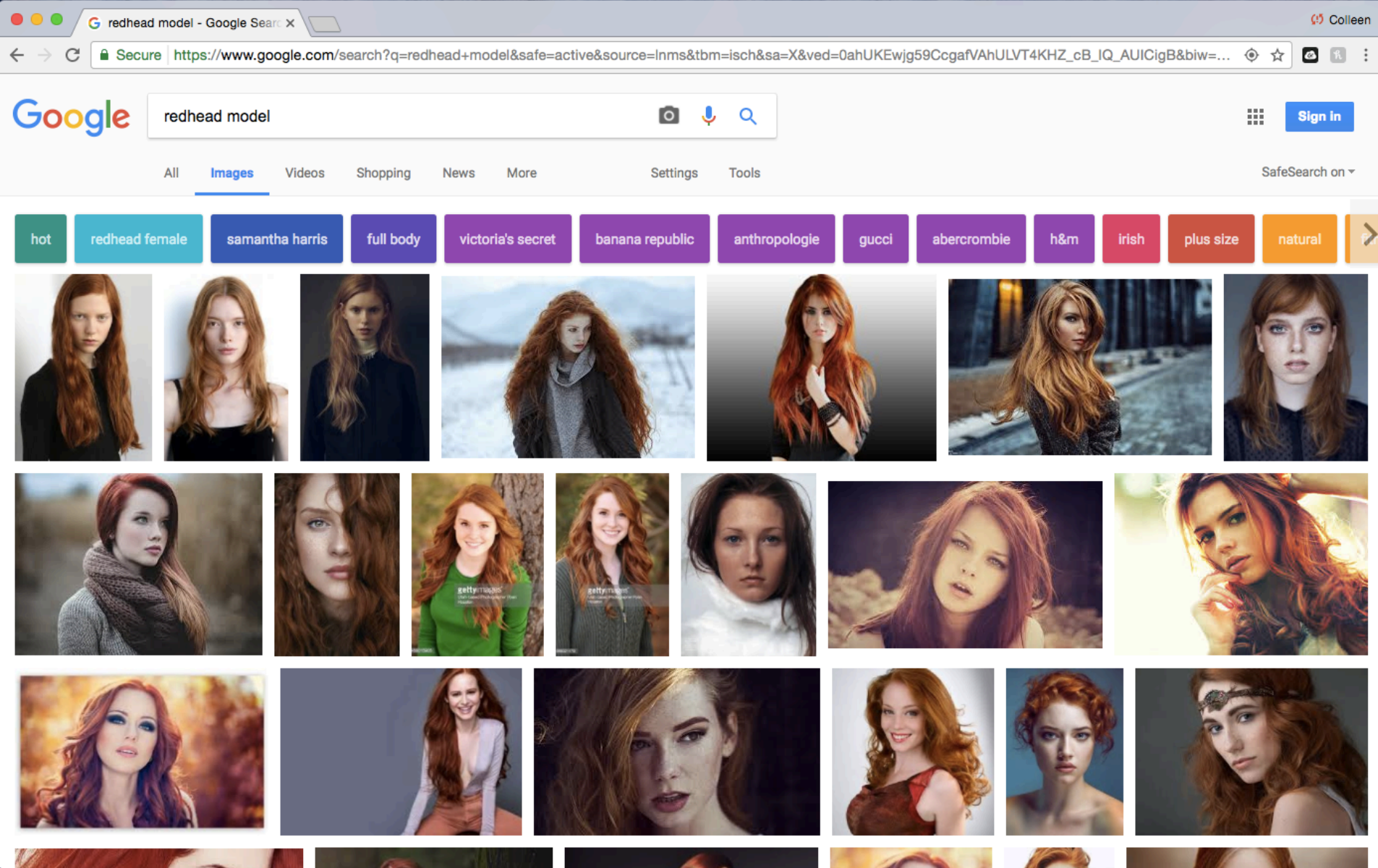
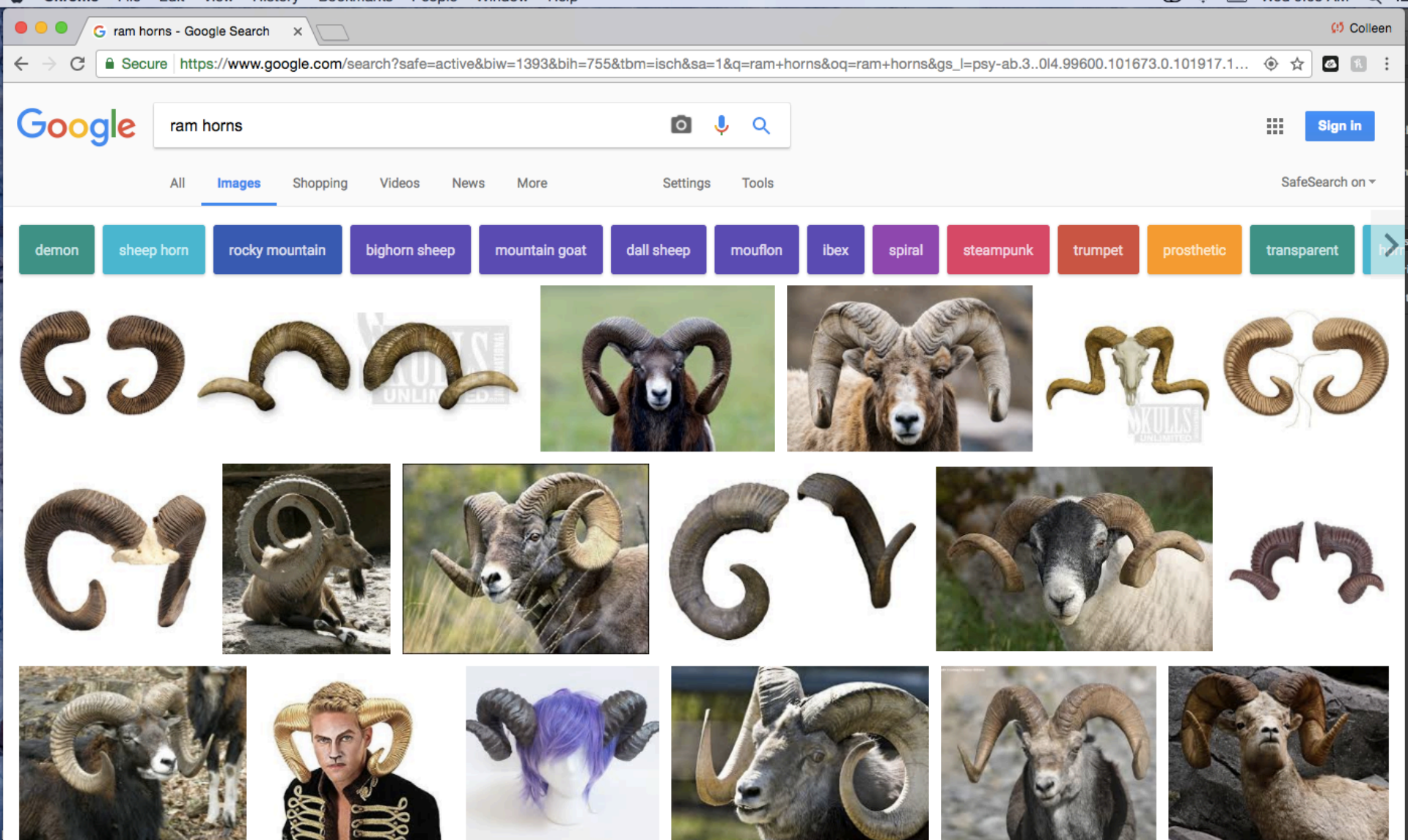


# Fantasy Character Design

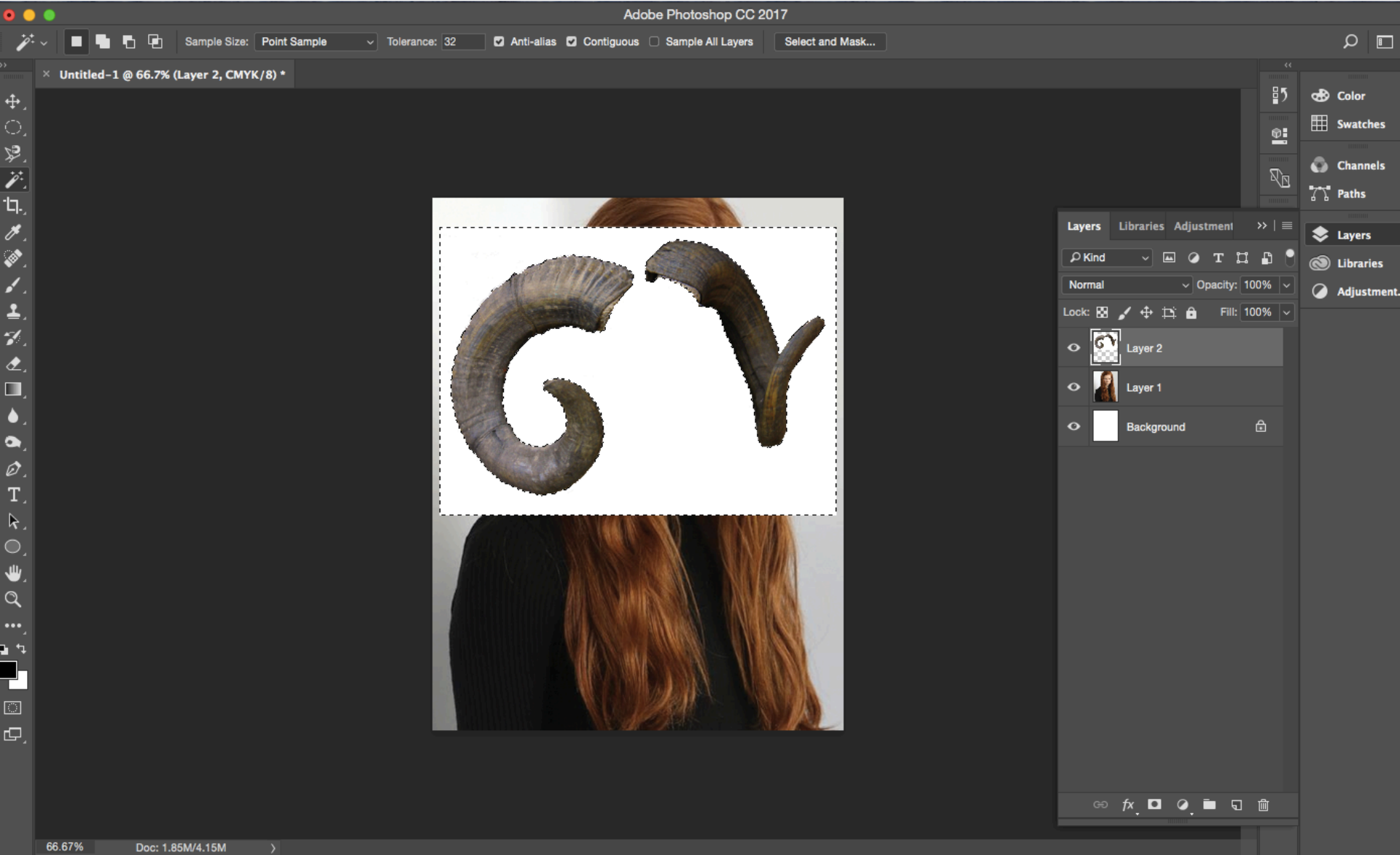
Graphic Art and Design



Start by searching for a good base image for your character. For mine, I knew I wanted a red hair woman. Searching for “model” or “photography” helps.

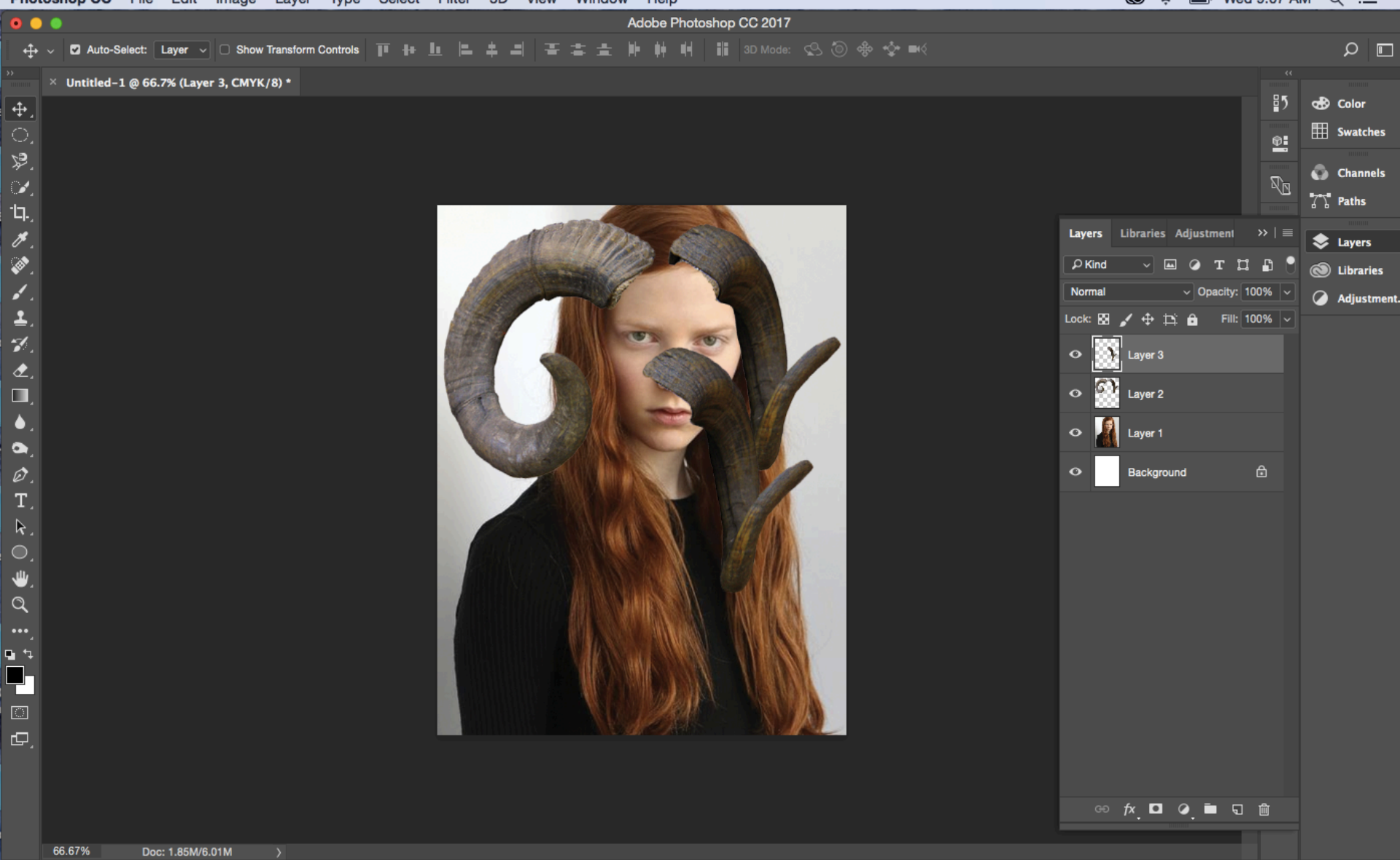


If your character has extra features take your time and find a good image to make your collage/sketch

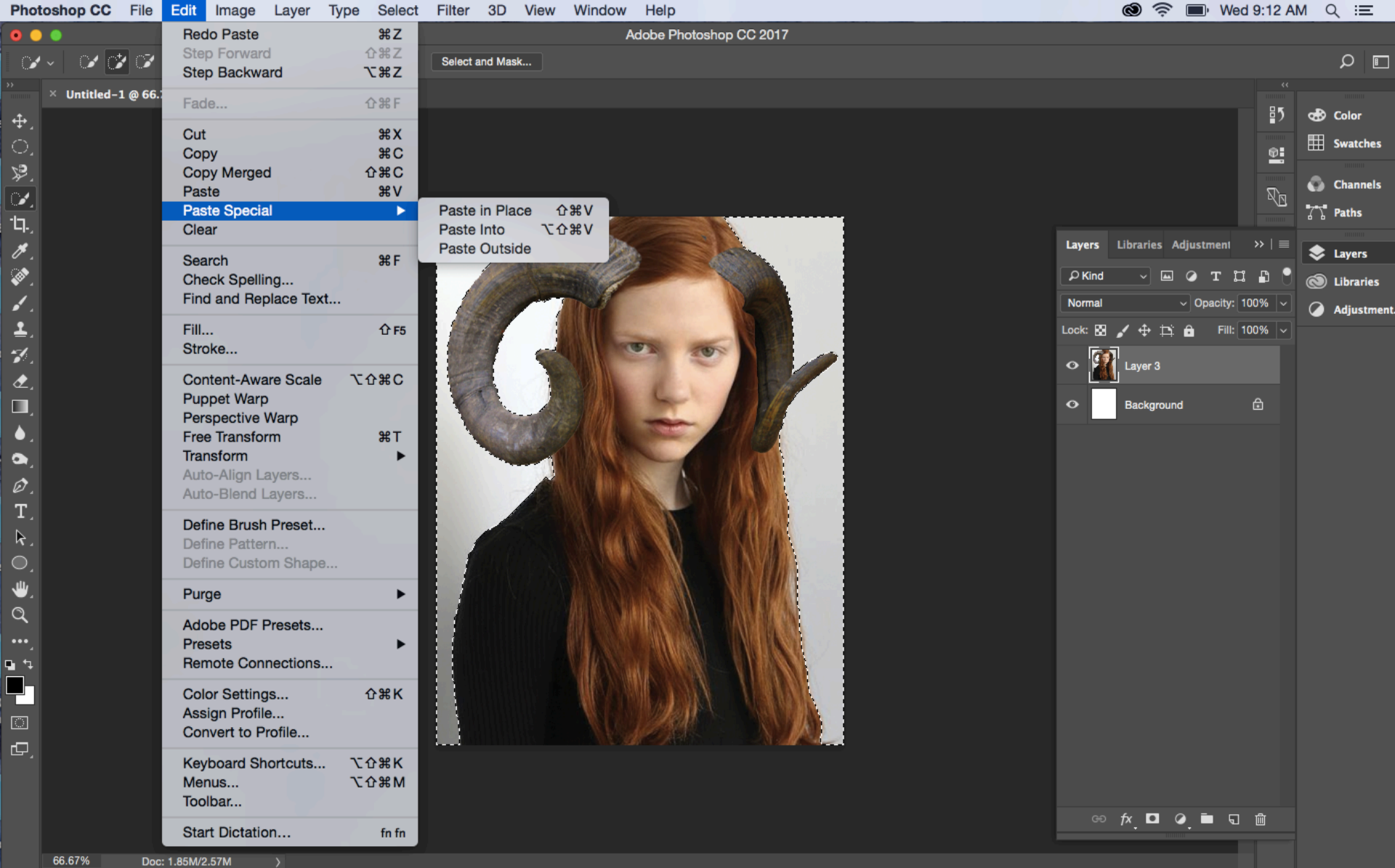


Like usual, use the magic wand or direct selection tools to remove any unwanted backgrounds. Build your collage/sketch in photoshop.

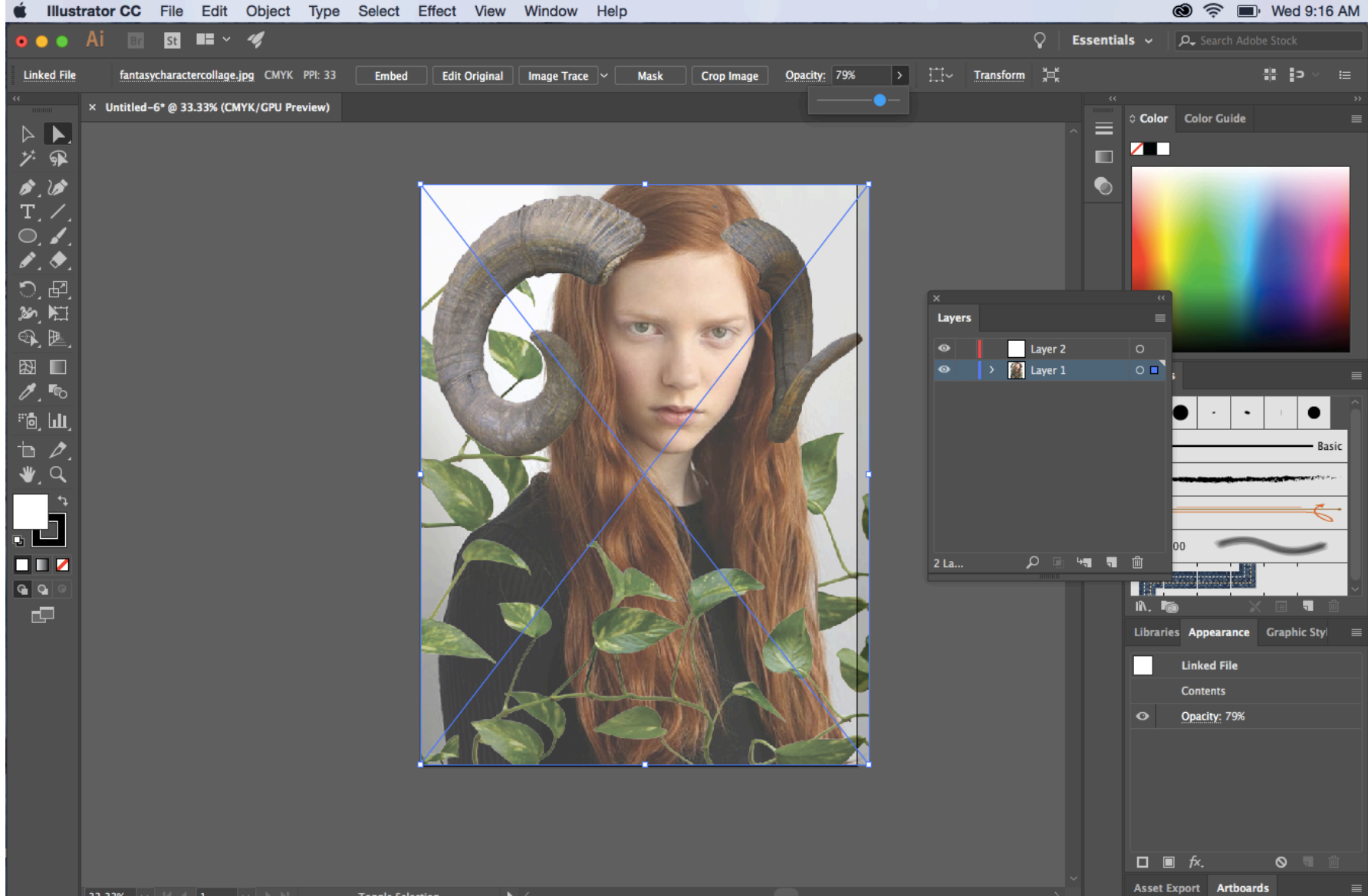




Don't forget if you need to separate an image and manipulate it separately, use the direct selection tool, select it, then press **CONTROL > J**. This duplicates it and places it on a new layer. Erase what you don't need.

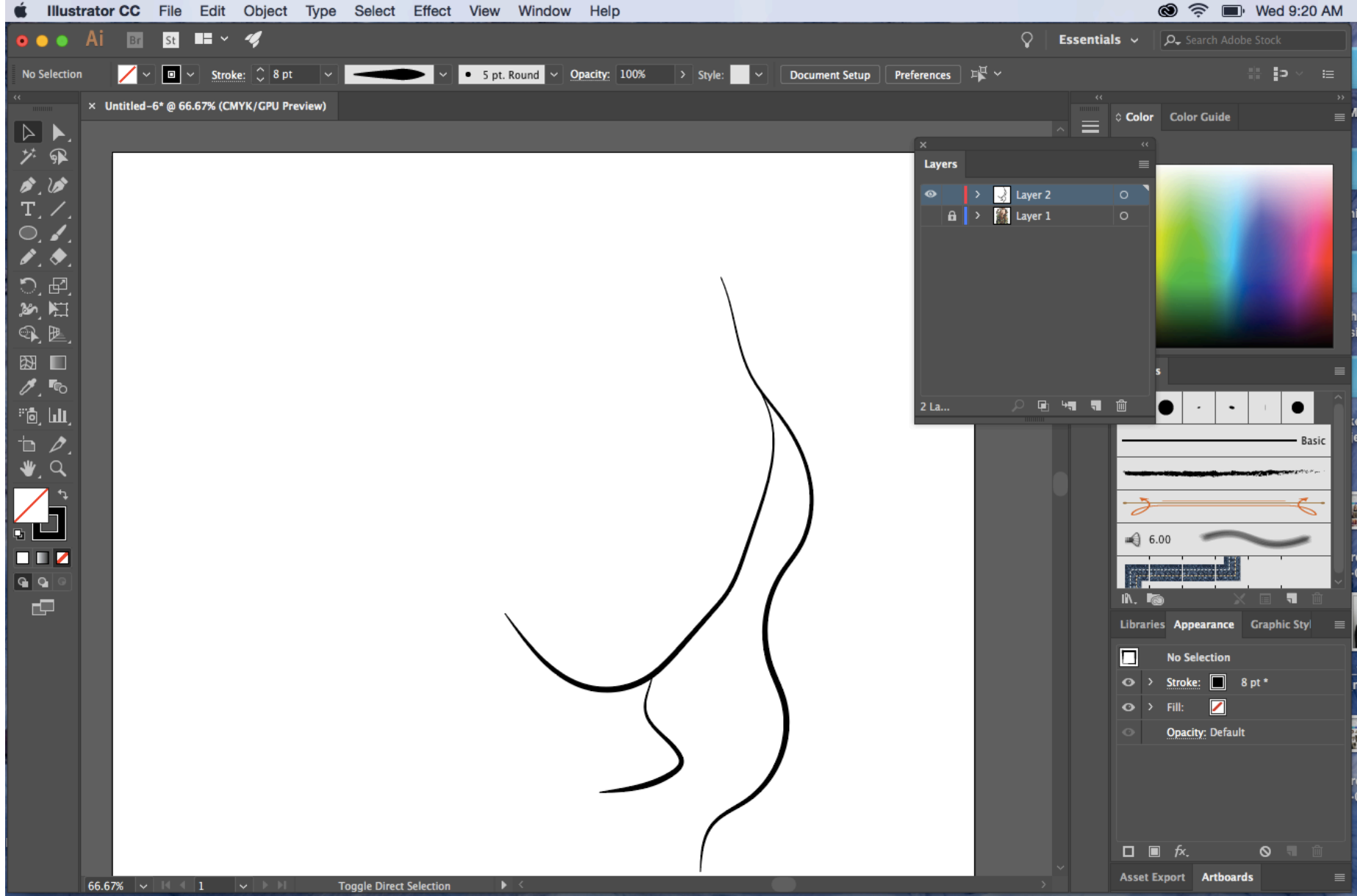


Don't forget if you want to put something just in a background, use the direct selection tool to choose where you want it, then Edit > Paste Special > Paste Into



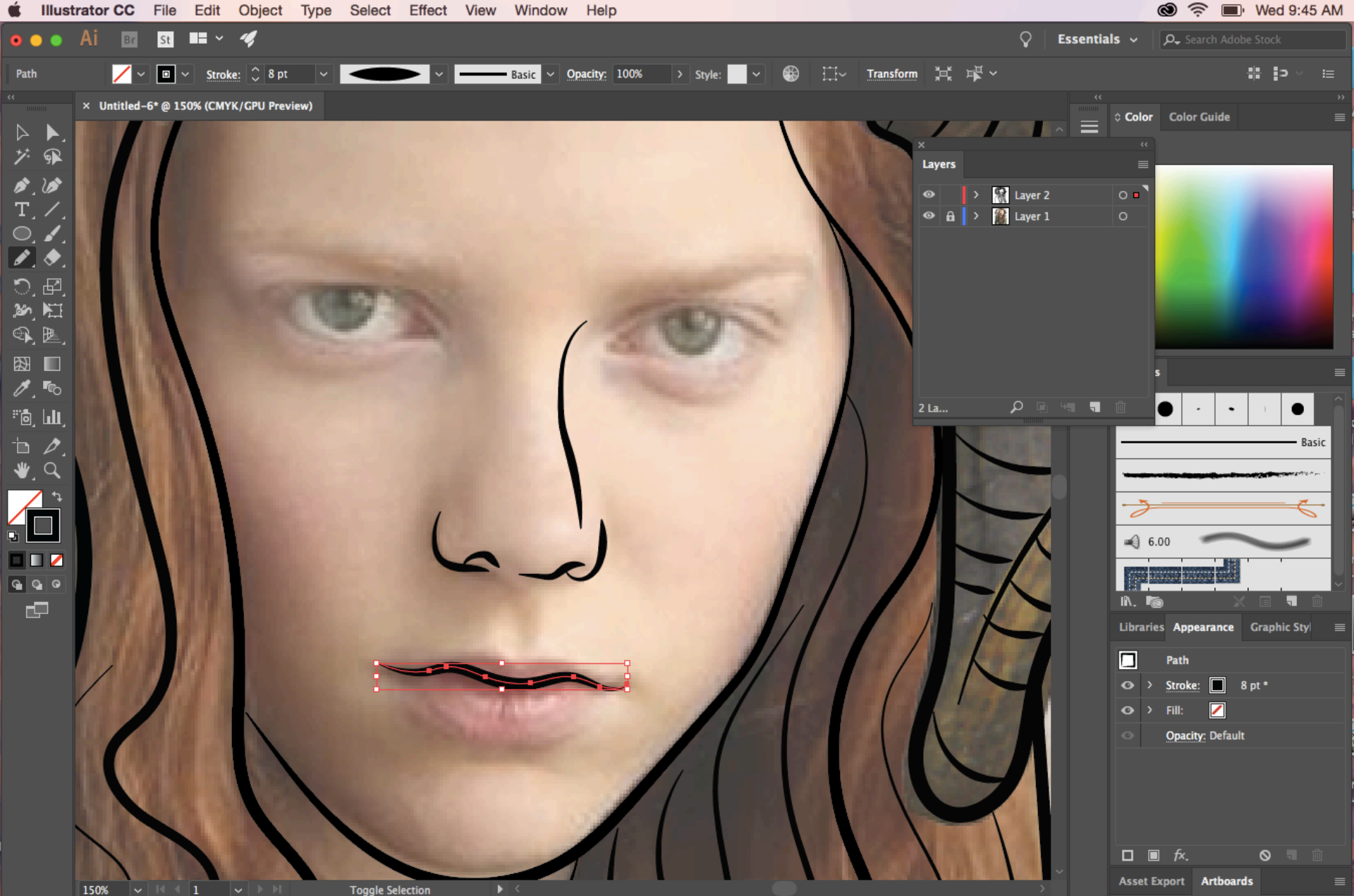
Once you are happy with your collage/sketch SAVE IT AS A JPEG AND PUT IN YOUR GOOGLE PORTFOLIO FOR GRADING

Then copy and paste it in a new Adobe Illustrator file. Here you will be drawing all your contour lines.

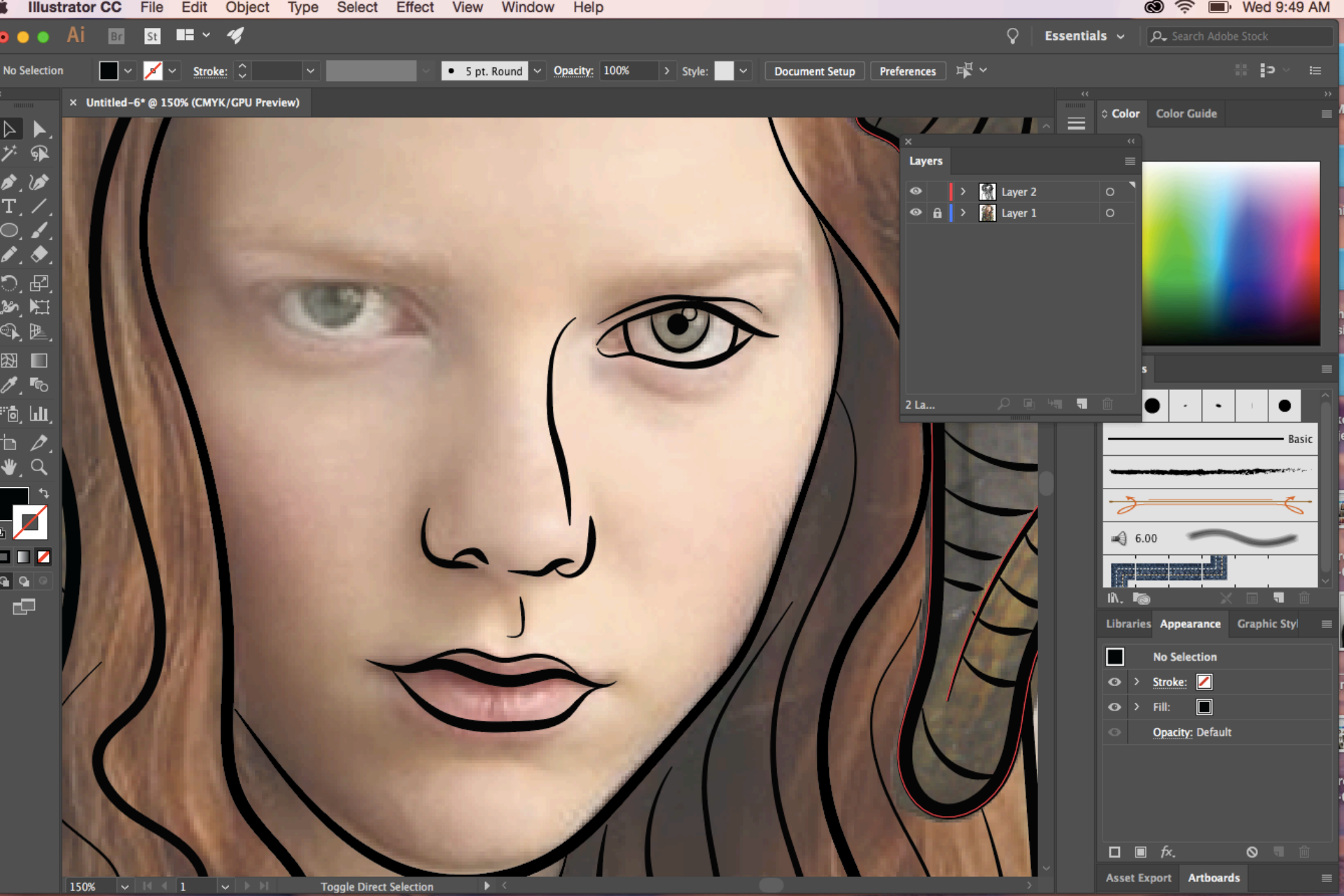


Use the pencil tool, brush tool, or pen tool (your own personal preference) and draw your contour lines. Turn off the collage layer to see your progress. Change the pt size and the stroke style as you need to for line quality changes.

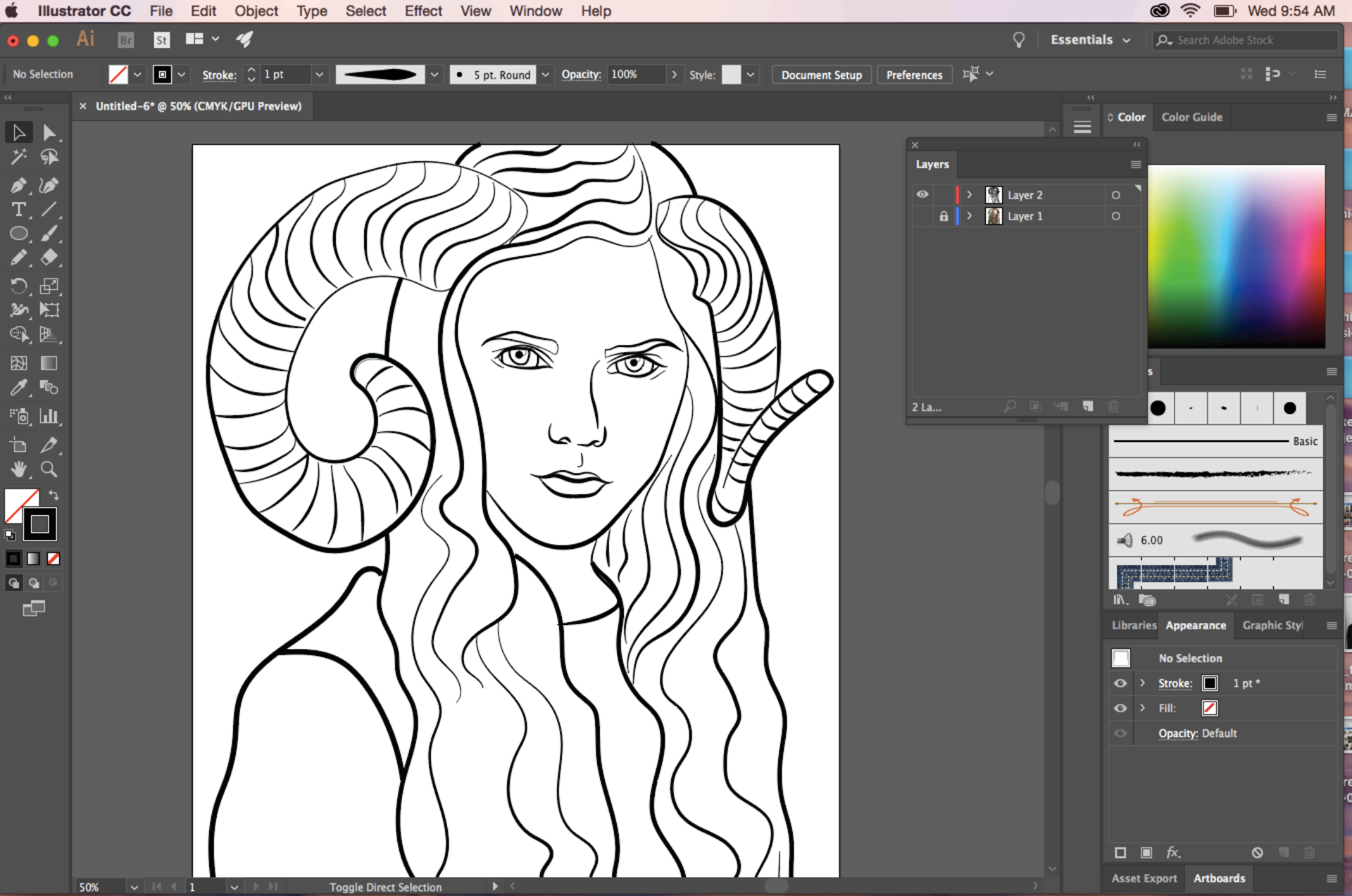




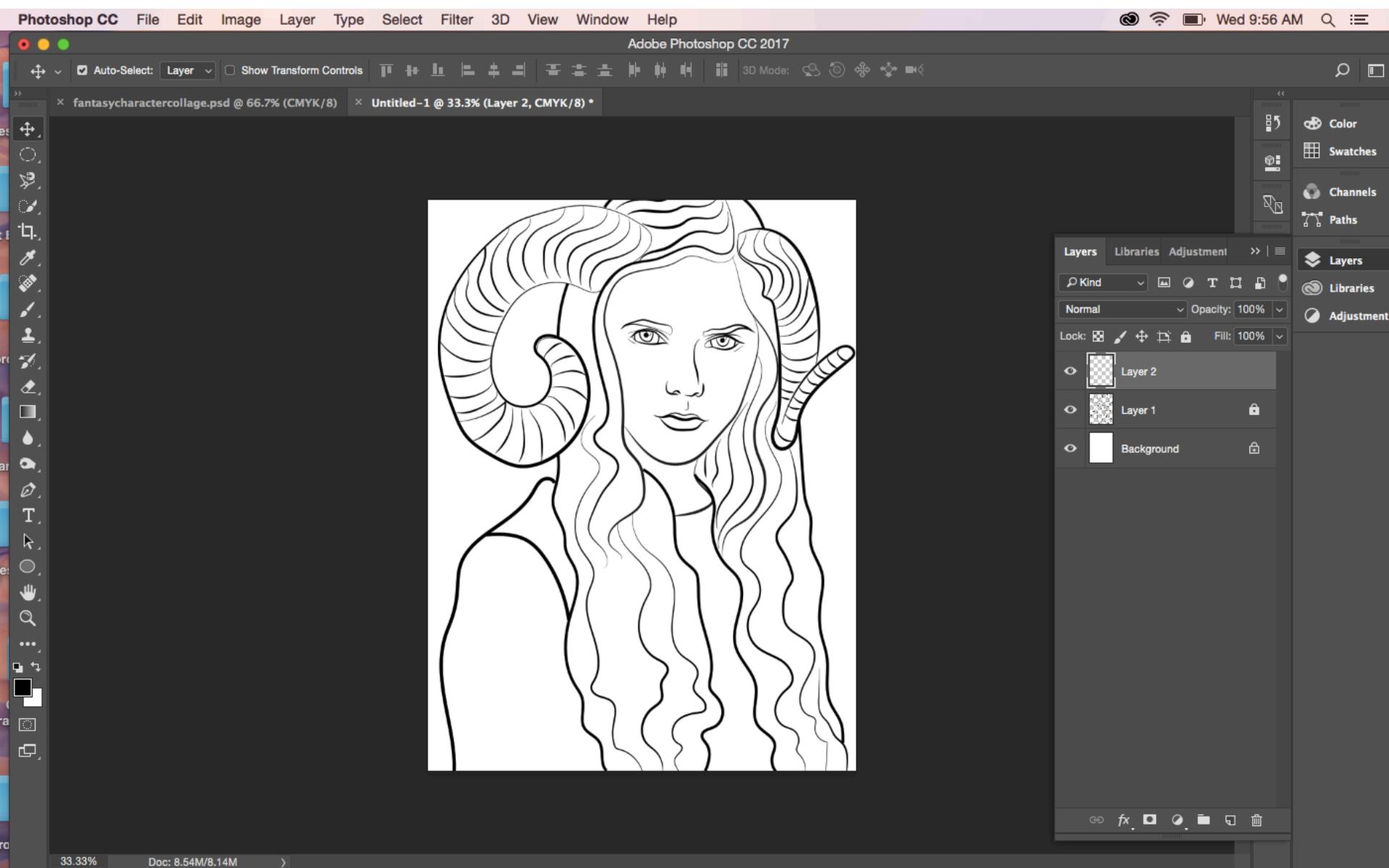
Take your time! You want to choose the best contour lines to describe your character.



Zoom in! Take your time. PLEASE MAKE SURE YOU ARE DRAWING THE LINES ON A SEPARATE LAYER!!

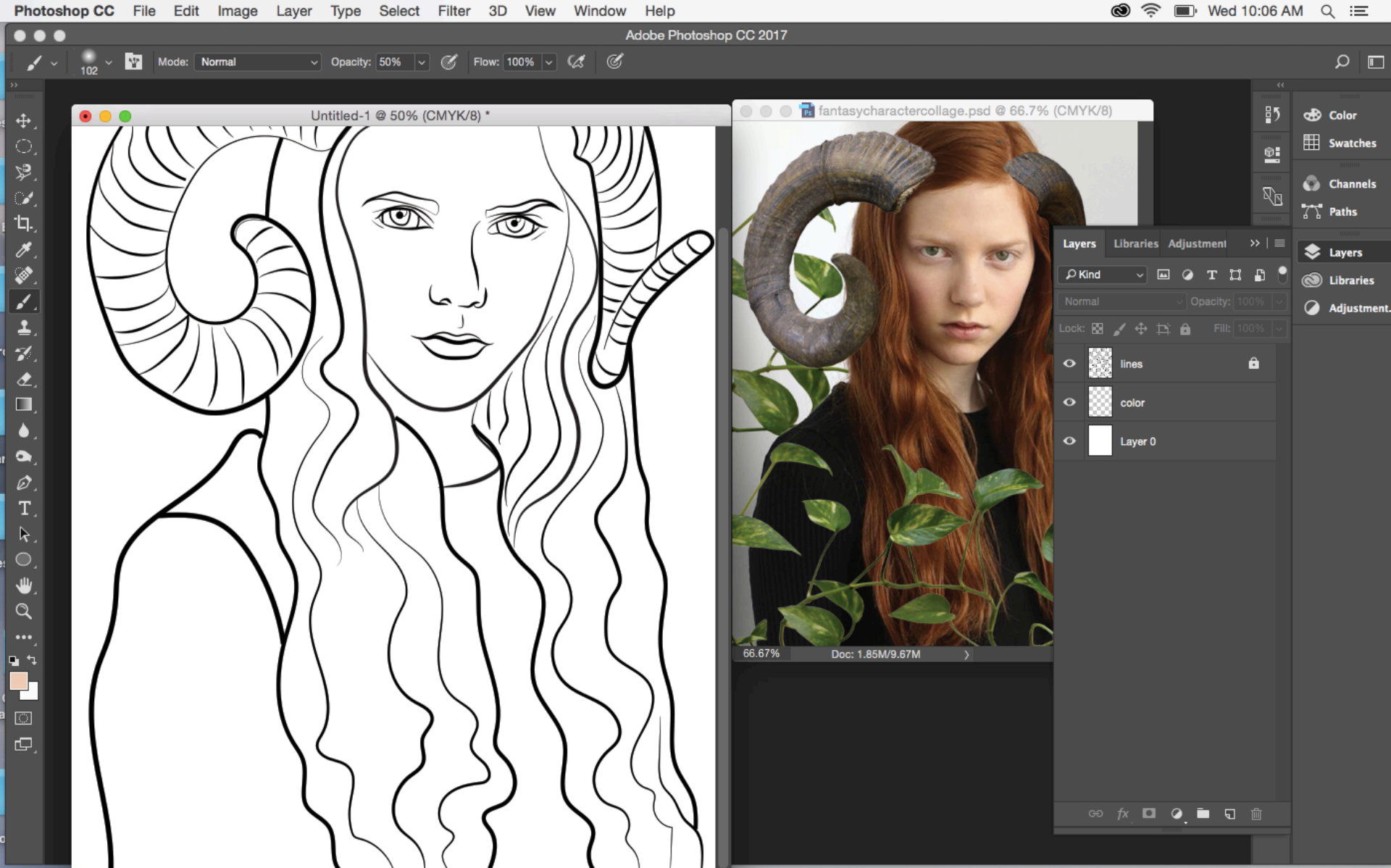


Once you are happy with your line work, copy and paste it and bring it back into Photoshop.

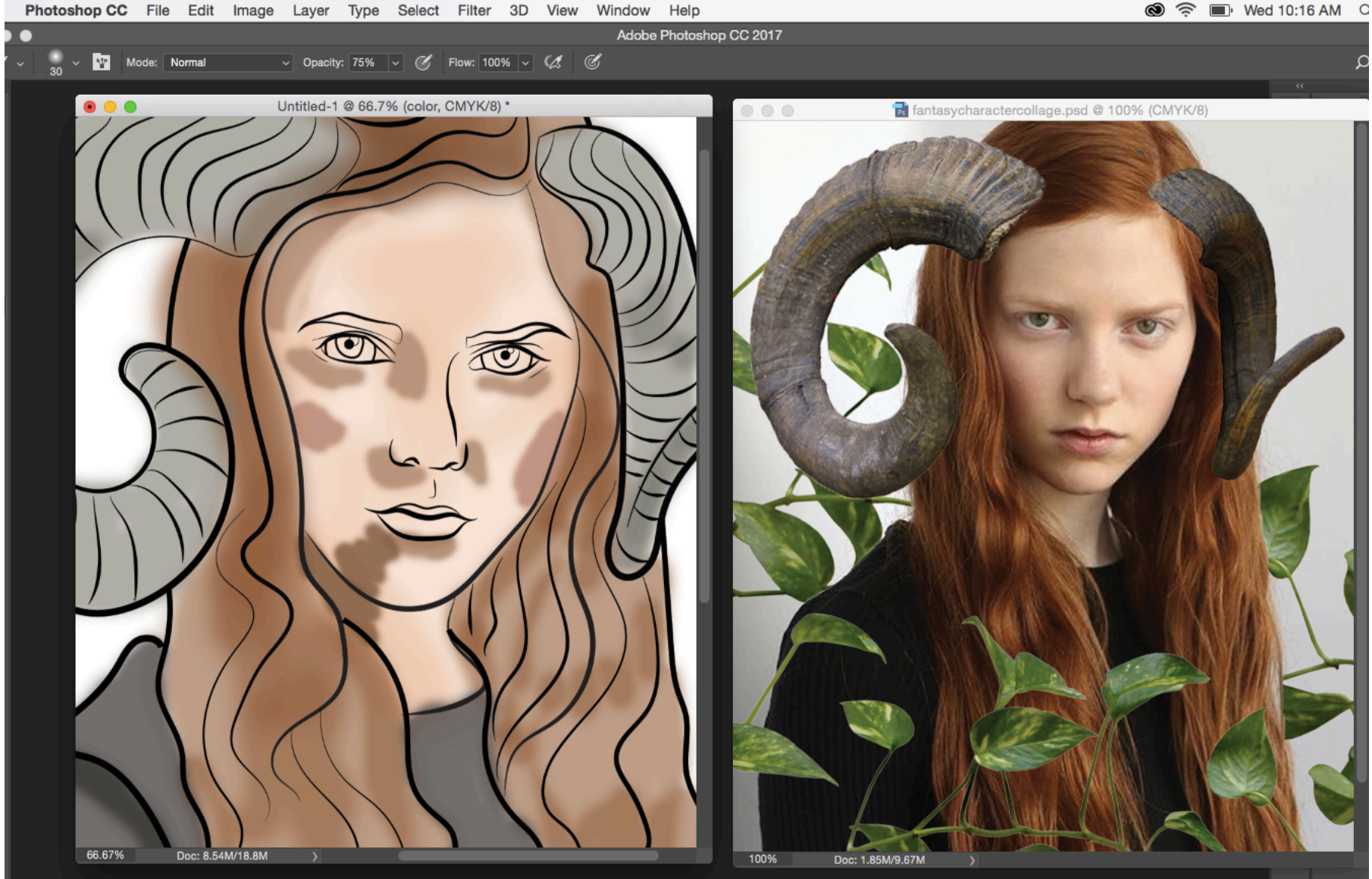


Put your line layer on top, and make a layer underneath for the color.





Open your collage/sketch in photoshop as well. Drag it out and have it visible while you paint.



I don't expect a full digital painting, this is still an illustration. Basic blocking and blending. Remember to press ALT and click on the colors you need. You can also make your character and unnatural color!

Change your brush size often, your opacity often and the texture of your brush often.





Add an appropriate background.  
You can paint it in or use a photo or a combo of both!

Don't forget to merge all your layers in the end and adjust the contrast/brightness etc as needed

**SAVE AS A JPEG AND PUT IN  
YOUR GOOGLE PORTFOLIO FOR  
GRADING!**